



**VOLVO V40: 1LFH143**

Vinnumber:	<b>VV1MV74L1G2296767</b>	Versionname:	<b>2.0 D2 BASE</b>
First Registrationdate:	<b>14/09/2015</b>	Fiscalpower:	
Expertise Mileage:	<b>104719</b>	Power Kw:	<b>88</b>
Bodytype:		Body color:	<b>Black</b>
Gearbox:	<b>MAN 6 VIT</b>	Paint type:	<b>Metalic</b>
Transmission:	<b>Front</b>	Rims summer:	<b>Aluminium</b>
Fueltype:	<b>Diesel</b>	Oil level:	<b>OK</b>
Battery functioning:	<b>Yes</b>	Parking lot:	<b>PARKING A12</b>
Number of doors:	<b>5</b>		
Number of seats:	<b>5</b>		
Number head rests:	<b>5</b>		
Rims summer:	<b>Aluminium</b>		
Category:	<b>Passenger Car</b>		
Oil level:	<b>OK</b>		
Registration Certificate Car (BE):	<b>Yes</b>		

**Options**

Radio CD		Central consol F	
GPS storage		Luggage cover	
GPS storage	<b>HD</b>	Rear parking sensors	
Windows electric F		Type of Tow bar	<b>No Tow bar</b>
Windows electric R			
Cruise Control			
Steering wheel multifunctional			
Radio multimedia			
Type of headlighting	<b>Headlighting Halogen</b>		
Type of GPS	<b>GPS big screen color</b>		
Type of Lining	<b>Lining fabrics</b>		
Type of climate control	<b>Manual climate control</b>		

**Limited Technical Inspection**

Airco functioning	<b>OK</b>	Battery functioning	<b>Yes</b>
Tires wear profile	<b>OK</b>	Power steering	<b>Yes</b>
Idle position	<b>OK</b>	Sound engine	<b>OK</b>
Engine startingtime	<b>OK</b>	Clutch test	<b>OK</b>
Exhaust gass	<b>OK</b>	Wiper fluid level	<b>OK</b>
Handbrake	<b>OK</b>	Transmission	<b>OK</b>
		Lighting	<b>OK</b>
		Wiperblades	<b>OK</b>

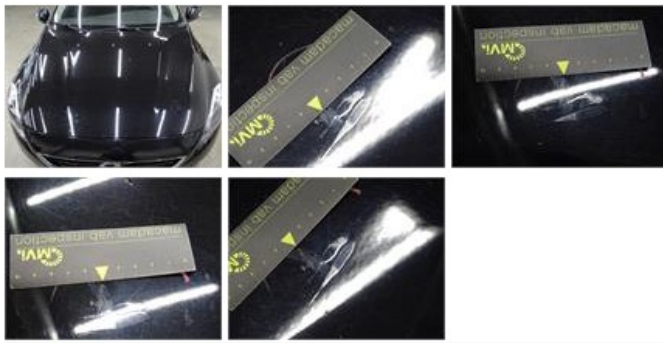
**Degree of wear**

	<b>205/55/16/91 H LightMetal</b>			
Summer tyres:	Fr.L.	<b>Michelin: 3 mm</b>	Fr.R.	<b>Michelin: 3 mm</b>
	Re.L.	<b>Michelin: 5 mm</b>	Re.R.	<b>Michelin: 5 mm</b>

**Assistance equipment**

Repair kit	<b>Yes</b>	Compressor	<b>Yes</b>
Number of charging cables (normal)	<b>0</b>		
Number of charging cables (rapid charge)	<b>0</b>		

Total cost ex VAT	1466,63
Bonnet, Chemical polution, LI - Repair and paint (complete)	290,08



Wing R R, Scratch(es), Acceptable 0,00

No pictures to display

Bumper R, Scratch(es), Acceptable 0,00

No pictures to display

Door R R, Scratch(es), Acceptable 0,00

No pictures to display

Bumper F, Scratch(es), Acceptable 0,00

No pictures to display

Alloy rim R R, Deformed / Strained, E - Replace 235,20



Alloy rim F L, Scratch(es), LI - Repair and paint (complete) 95,00



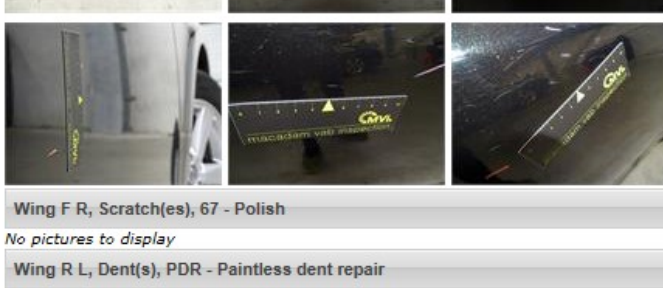
Door R L, Scratch(es), Acceptable 0,00

No pictures to display

Door F L, Scratch(es), Acceptable 0,00

No pictures to display

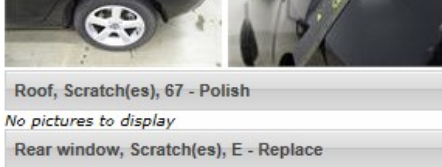
Door F R, Dent(s) and scratch(es), LI - Repair and paint (complete) 318,35



Wing F R, Scratch(es), 67 - Polish 0,00

No pictures to display

Wing R L, Dent(s), PDR - Paintless dent repair 63,00



Roof, Scratch(es), 67 - Polish 0,00

No pictures to display

Rear window, Scratch(es), E - Replace 370,00



Alloy rim F R, Scratch(es), LI - Repair and paint (complete)

95,00

