



**FORD FOCUS CLIPPER: DY7840**

Vinnumber:	<b>WF06XXGCC6GD45795</b>	Versionname:	<b>1.5 TDCI 88KW S/S BUSINESS EDITION+</b>
First Registrationdate:	<b>21/09/2016</b>	Fiscalpower:	
Expertise Mileage:	<b>103190</b>	Power Kw:	<b>88</b>
Bodytype:	<b>Break</b>	Body color:	<b>Grey</b>
Gearbox:	<b>MAN 6 VIT</b>	Paint type:	<b>Metalic</b>
Transmission:	<b>Front</b>	Rims summer:	<b>Aluminium</b>
Fueltype:	<b>Diesel</b>	Oil level:	<b>OK</b>
Battery functioning:	<b>Yes</b>	Parking lot:	<b>1109</b>
Number of doors:	<b>5</b>		
Number of seats:	<b>5</b>		
Number head rests:	<b>5</b>		
Rims summer:	<b>Aluminium</b>		
Category:	<b>Passenger Car</b>		
Oil level:	<b>OK</b>		

**Options**

Radio CD		Central consol F	
GPS storage	<b>SD</b>	Luggage cover	
GPS storage		Front parking sensors	
Windows electric F		Rear parking sensors	
Windows electric R		Type of Tow bar	<b>No Tow bar</b>
Cruise Control			
Steering wheel multifunctional			
Radio multimedia			
Type of headlighting	<b>Headlighting Halogen</b>		
Type of GPS	<b>GPS big screen color</b>		
Type of Lining	<b>Lining fabrics</b>		
Type of climate control	<b>Autom climate control</b>		

**Limited Technical Inspection**

Airco functioning	<b>OK</b>	Battery functioning	<b>Yes</b>
Tires wear profile	<b>OK</b>	Power steering	<b>Yes</b>
Idle position	<b>OK</b>	Sound engine	<b>OK</b>
Engine startingtime	<b>OK</b>	Clutch test	<b>OK</b>
Exhaust gass	<b>OK</b>	Wiper fluid level	<b>OK</b>
Handbrake	<b>OK</b>	Transmission	<b>OK</b>
		Lighting	<b>OK</b>
		Wiperblades	<b>OK</b>

**Degree of wear**

<b>205/55/16/91 V LightMetal</b>			
Summer tyres:	Fr.L. <b>Michelin: 6 mm</b>	Fr.R. <b>Michelin: 6 mm</b>	
	Re.L. <b>Michelin: 4 mm</b>	Re.R. <b>Michelin: 4 mm</b>	

**Assistance equipment**

Repair kit	<b>Yes</b>	Compressor	<b>Yes</b>
Number of charging cables (normal)	<b>0</b>		
Number of charging cables (rapid charge)	<b>0</b>		

Total cost ex VAT	634,63
Rocker panel inner R R, Scratch(es), Acceptable	0,00
<i>No pictures to display</i>	
Door F R, Dent(s) and scratch(es), LI - Repair and paint (complete)	318,35



Door panel R L, Scratch(es), Acceptable 0,00

No pictures to display

Alloy rim F R, Scratch(es), LI - Repair and paint (complete) 95,00



Wing R L, Scratch(es), Acceptable 0,00

No pictures to display

Bumper R, Scratch(es), Acceptable 0,00

No pictures to display

Tailgate, Scratch(es), Acceptable 0,00

No pictures to display

Bumper F, Scratch(es), Acceptable 0,00

No pictures to display

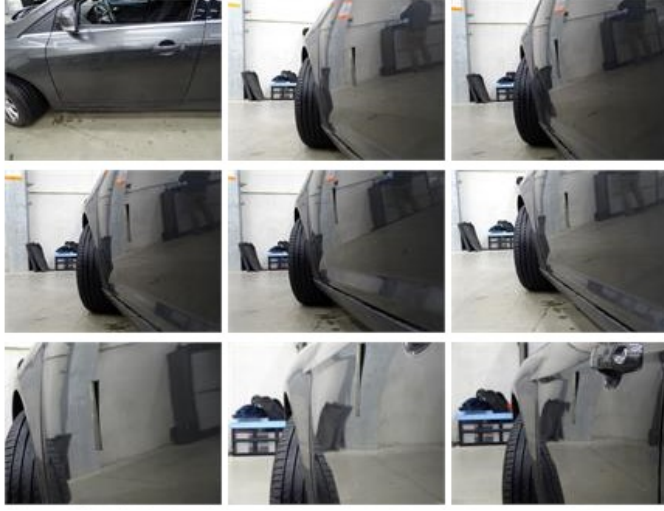
Bumper F M, Scratch(es), Smart repair 110,64



Wing F R, Scratch(es), Acceptable 0,00

No pictures to display

Door F L, Bad repair, Acceptable 0,00





Door R R, Dent(s), Acceptable	0,00
-------------------------------	------

*No pictures to display*

Wing R R, Dent(s), Acceptable	0,00
-------------------------------	------

*No pictures to display*

Trunk lid covering R, Scratch(es), Smart repair	110,64
---	--------

