


BMW 3 GRAN TURISMO: 1LPP866

Vinnumber:	WBA8Y51090G430475	Versionname:	2.0 318D (100KW) GRAN TURISMO
First Registrationdate:	6/11/2015	Fiscalpower:	
Expertise Mileage:	182986	Power Kw:	100
Bodytype:		Body color:	Blue
Gearbox:	MAN 6 VIT	Paint type:	Metalic
Transmission:	Back	Rims summer:	Aluminium
Fueltype:	Diesel	Oil level:	NOT OK
Maintenance:	NOT OK	Parking lot:	2307
Battery functioning:	Yes		
Number of doors:	5		
Number of seats:	5		
Number head rests:	5		
Rims summer:	Aluminium		
Category:	Passenger Car		
Oil level:	NOT OK		
Registration Certificate Car (BE):	Yes		

Options

Radio CD	Central consol F
Windows electric F	Luggage cover
Windows electric R	Rear parking sensors
Cruise Control	
Steering wheel multifunctional	
Type of headlighting	Headlighting Halogen
Type of GPS	GPS big screen color
Type of Lining	Lining artificial leather
Type of climate control	Autom climate control

Limited Technical Inspection

Airco functioning	OK	Battery functioning	Yes
Tires wear profile	OK	Power steering	Yes
Idle position	OK	Sound engine	OK
Engine startingtime	OK	Clutch test	OK
Exhaust gass	OK	Wiper fluid level	OK
Handbrake	OK	Transmission	OK
		Lighting	OK
		Wiperblades	OK

Degree of wear

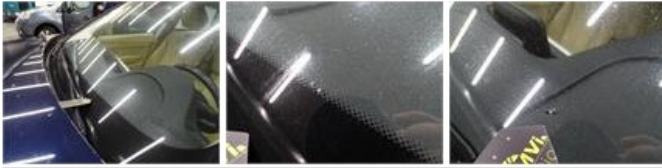
	225/55/17/92 MS LightMetal			
Winter tyres:	Fr.L.	Goodyear: 4 mm	Fr.R.	Goodyear: 4 mm
	Re.L.	Goodyear: 5 mm	Re.R.	Goodyear: 5 mm

Assistance equipment

Repair kit	Yes	Compressor	Yes
Total cost ex VAT			989,08
Door R L, Scratch(es), Acceptable			0,00
<i>No pictures to display</i>			
Tailgate, Dent(s), Acceptable			0,00
<i>No pictures to display</i>			
Bumper R, Scratch(es), Acceptable			0,00
<i>No pictures to display</i>			
Bumper F, Scratch(es), LI - Repair and paint (complete)			211,80



Windscreen, Stone chip(s), E - Replace	487,20
--	--------



Maintenance, Maintenance, Execute	0,00
-----------------------------------	------

No pictures to display

Door R R, Scratch(es), Acceptable	0,00
-----------------------------------	------

No pictures to display

Bonnet, Scratch(es), LI - Repair and paint (complete)	290,08
---	--------

