



BMW X5: PQ5532			
Vinnumber:	WBAKS610700N61880	Versionname:	3.0 XDRIVE40D 4WD AUTO
First Registrationdate:	10/02/2016	Fiscalpower:	
Expertise Mileage:	132875	Power Kw:	230
Bodytype:		Body color:	Silver
Gearbox:	Automatic	Paint type:	Metalic
Transmission:	4 Weel	Rims summer:	Aluminium
Fueltype:	Diesel	Oil level:	OK
Battery functioning:	Yes	Parking lot:	2314
Number of doors:	5		
Number of seats:	5		
Number head rests:	5		
Rims summer:	Aluminium		
Category:	Passenger Car		
Oil level:	OK		

Options			
Radio CD		Seats electric F L	
GPS storage		Seats electric F R	
GPS storage	HD	Sun Roof electric	
Windows electric F		Panoramic roof	
Windows electric R		Central consol F	
Cruise Control		Luggage cover	
Steering wheel multifunctional		Front parking sensors	
Seats F heated		Rear parking sensors	
Radio multimedia		Type of Tow bar	No Tow bar
Type of headlighting	Headlighting LED		
Type of GPS	GPS big screen color		
Type of Lining	Lining leather		
Type of climate control	Autom climate control		
Head-up Display			

Limited Technical Inspection			
Airco functioning	OK	Battery functioning	Yes
Tires wear profile	OK	Power steering	Yes
Idle position	OK	Sound engine	OK
Engine startingtime	OK	Clutch test	OK
Exhaust gass	OK	Wiper fluid level	OK
Handbrake	OK	Transmission	OK
		Lighting	OK
		Wiperblades	OK

Degree of wear				
	255/50/19/107 H LightMetal			
Winter tyres:	Fr.L.	Goodyear: 5 mm	Fr.R.	Goodyear: 5 mm
	Re.L.	Goodyear: 6 mm	Re.R.	Goodyear: 6 mm

Assistance equipment			
Number of charging cables (normal)	0	Runflat	Yes
Number of charging cables (rapid charge)	0		

Total cost ex VAT	4179,73
Alloy rim F R polished, Scratch(es), LI - Repair and paint (complete)	95,00



Door F L, Scratch(es), LI - Repair and paint (complete) 382,02



Alloy rim F L polished, Scratch(es), LI - Repair and paint (complete) 95,00



Windscreen, Stone chip(s), Windscreen repair 58,80



Sill trim F L, Broken, E - Replace 38,40



Wing F R, Repaired, Acceptable 0,00

No pictures to display

Door panel R R, Tear, E - Replace 132,00



Tailgate, Scratch(es), LI - Repair and paint (complete) 362,02



Alloy rim R L polished, Scratch(es), LI - Repair and paint (complete) 95,00



Rearview mirror basis L, Scratch(es), Acceptable 0,00

No pictures to display

Door F R, Dent(s) and scratch(es), LI - Repair and paint (complete) 382,02



Switch, Broken, E - Replace 10,00



Wing F L, Scratch(es), Acceptable 0,00

No pictures to display

Sill outer L, Scratch(es), It - Spot repair 115,56



Door R L, Scratch(es), Acceptable 0,00

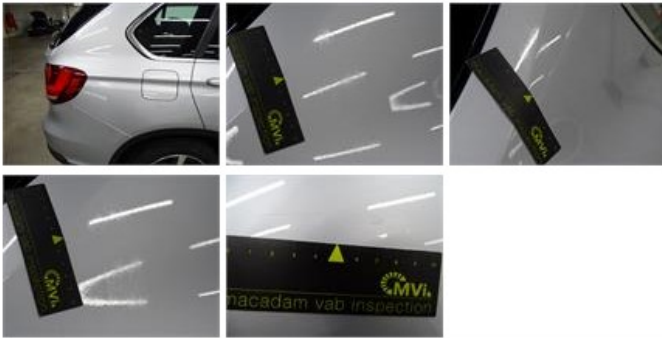
No pictures to display

Bumper F, Scratch(es), LI - Repair and paint (complete) 254,16





Wing R R, Chemical polution, LI - Repair and paint (complete) 369,84



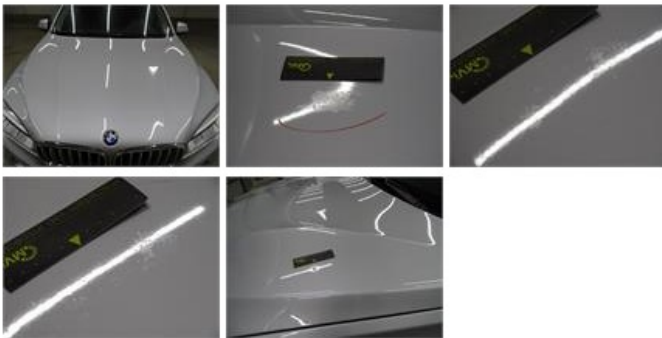
Rocker panel inner R L, Scratch(es), Acceptable 0,00

No pictures to display

Alloy rim R R polished, Scratch(es), LI - Repair and paint (complete) 95,00



Bonnet, Chemical polution, LI - Repair and paint (complete) 348,09



Bumper cover R M, Scratch(es), Smart repair 110,64



Bumper R, Scratch(es), LI - Repair and paint (complete) 254,16





Door R R, Dent(s) and scratch(es), LI - Repair and paint (complete)

430,02



Door panel R L, Tear, E - Replace

132,00



Rear window, Scratch(es), E - Replace

420,00

