



MINI : 1PEN670

Vinnumber:	WMWXN110X03B51804	Versionname:	1.5 ONE D
First Registrationdate:	17/06/2016	Fiscalpower:	
Expertise Mileage:	88665	Power Kw:	70
Bodytype:		Body color:	Black
Gearbox:	MAN 6 VIT	Paint type:	Metalic
Transmission:	Front	Rims summer:	Aluminium
Fueltype:	Diesel	Oil level:	OK
Battery functioning:	Yes	Parking lot:	2408
Number of doors:	3		
Number of seats:	4		
Number head rests:	4		
Rims summer:	Aluminium		
Category:	Passenger Car		
Oil level:	OK		
Registration Certificate Car (BE):	Yes		

Options

GPS storage		Luggage cover	
GPS storage	HD	Type of Tow bar	No Tow bar
Windows electric F			
Radio multimedia			
Type of headlighting	Headlighting Halogen		
Type of GPS	GPS big screen color		
Type of Lining	Lining fabrics		
Type of climate control	Manual climate control		

Limited Technical Inspection

Airco functioning	OK	Battery functioning	Yes
Tires wear profile	OK	Power steering	Yes
Idle position	OK	Sound engine	OK
Engine startingtime	OK	Clutch test	OK
Exhaust gass	OK	Wiper fluid level	OK
Handbrake	OK	Transmission	OK
		Lighting	OK
		Wiperblades	OK

Degree of wear

	175/65/15/84 H LightMetal			
Summer tyres:	Fr.L.	Michelin: 5 mm	Fr.R.	Michelin: 5 mm
	Re.L.	Michelin: 6 mm	Re.R.	Michelin: 6 mm

Assistance equipment

Repair kit	Yes	Compressor	Yes
Number of charging cables (normal)	0		
Number of charging cables (rapid charge)	0		

Total cost ex VAT	2083,54
Wing trim R R, Scratch(es), Acceptable	0,00
<i>No pictures to display</i>	
Wheel hub cap F L, Not original part, Acceptable	0,00



Wing R R, Scratch(es), LI - Repair and paint (complete)

308,20



Alloy rim F L, Scratch(es), LI - Repair and paint (complete)

95,00



Bumper F, Scratch(es), Acceptable

0,00

No pictures to display

Alloy rim F R, Scratch(es), LI - Repair and paint (complete)

95,00



Rear spoiler, Chemical polution, LI - Repair and paint (complete)

115,56



Wing R L, Dent(s) and scratch(es), LI - Repair and paint (complete)

308,20



Wing trim R L, Scratch(es), Acceptable

0,00

No pictures to display

Bonnet, Chemical polution, LI - Repair and paint (complete)

290,08





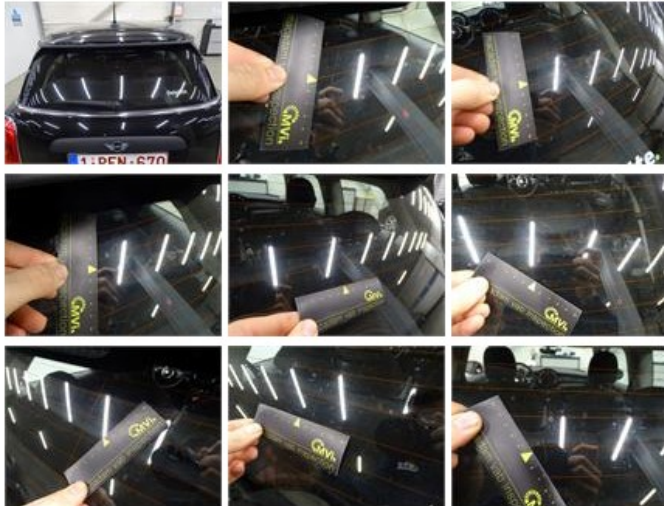
Wheel nut, Not functioning (well), Repair/replace (lump sum)

5,00



Rear window, Scratch(es), E - Replace

370,00



Door F R, Scratch(es), Acceptable

0,00

No pictures to display

Door F L, Scratch(es), Acceptable

0,00

No pictures to display

Roof, Chemical pollution, LI - Repair and paint (complete)

481,50



Aerial, Broken, E - Replace

15,00



Bumper R, Scratch(es), Acceptable

0,00

No pictures to display