



**LU Volkswagen Golf: VK7635**

Vinnumber:	<b>WVWZZZAUZJP039891</b>	Versionname:	<b>1.5 TSI 110kW Highline DSG</b>
First Registrationdate:	<b>24/10/2017</b>	Fiscalpower:	
Expertise Mileage:	<b>23396</b>	Power Kw:	<b>110</b>
Bodytype:		Body color:	<b>Grey</b>
Gearbox:	<b>Automatic</b>	Paint type:	<b>Metalic</b>
Transmission:	<b>Front</b>	Rims summer:	<b>Aluminium</b>
Fueltype:	<b>Petrol</b>	Oil level:	<b>OK</b>
Maintenance:	<b>NOT OK</b>	Parking lot:	<b>1229</b>
Maintenance:	<b>UITVOEREN</b>		
Battery functioning:	<b>Yes</b>		
Number of doors:	<b>5</b>		
Number of seats:	<b>5</b>		
Number head rests:	<b>5</b>		
Rims summer:	<b>Aluminium</b>		
Category:	<b>Passenger Car</b>		
Oil level:	<b>OK</b>		
Registration Certificate Car (BE):	<b>No</b>		

**Options**

GPS storage	<b>SD</b>	Central consol F	
GPS storage		Luggage cover	
Windows electric F		Front parking sensors	
Windows electric R		Rear parking sensors	
Cruise Control		Type of Tow bar	<b>No Tow bar</b>
Steering wheel multifunctional			
Seats F heated			
Radio multimedia			
Type of headlighting	<b>Headlighting Halogen</b>		
Type of GPS	<b>GPS big screen color</b>		
Type of Lining	<b>Lining leather</b>		
Type of climate control	<b>Autom climate control</b>		
Adaptive cruise control			

**Limited Technical Inspection**

Airco functioning	<b>OK</b>	Battery functioning	<b>Yes</b>
Tires wear profile	<b>OK</b>	Power steering	<b>Yes</b>
Idle position	<b>OK</b>	Sound engine	<b>OK</b>
Engine startingtime	<b>OK</b>	Clutch test	<b>OK</b>
Exhaust gass	<b>OK</b>	Wiper fluid level	<b>OK</b>
Handbrake	<b>OK</b>	Transmission	<b>OK</b>
		Lighting	<b>OK</b>
		Wiperblades	<b>OK</b>

**Degree of wear**

<b>225/45/17/91 H LightMetal</b>				
Winter tyres:	Fr.L.	<b>Michelin: 7 mm</b>	Fr.R.	<b>Michelin: 7 mm</b>
	Re.L.	<b>Michelin: 8 mm</b>	Re.R.	<b>Michelin: 8 mm</b>

**Assistance equipment**

Repair kit	<b>Yes</b>	Compressor	<b>Yes</b>
Number of charging cables (normal)	<b>0</b>		
Number of charging cables (rapid charge)	<b>0</b>		

Total cost ex VAT 427,20

Alloy rim F R polished, Scratch(es), LI - Repair and paint (complete) 95,00



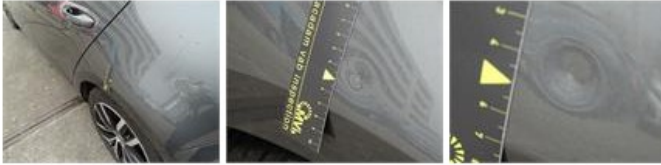
Wing R R, Dent(s), Acceptable 0,00

*No pictures to display*

Rearview mirror housing L, Scratch(es), Acceptable 0,00

*No pictures to display*

Wing R L, Dent(s) and scratch(es), LI - Repair and paint (complete) 332,20



Door F L, Scratch(es), Acceptable 0,00

*No pictures to display*

Maintenance, Maintenance, Execute 0,00



Bumper F L, Scratch(es), Acceptable 0,00

*No pictures to display*