



SSANGYONG KORANDO: 1PBA321

Vinnumber:	KPTA0B1W5GP240465	Versionname:	2.2 e3 Sapphire
First Registrationdate:	25/05/2016	Fiscalpower:	
Expertise Mileage:	58949	Power Kw:	131
Bodytype:		Body color	Black
Gearbox:	MAN 6 VIT	Paint type	Metalic
Transmission:	Front	Rims summer	Aluminium
Fueltype:	Diesel	Oil level	OK
Battery functioning	Yes	Parking lot	4302
Number of doors	5		
Number of seats	5		
Number head rests	5		
Rims summer	Aluminium		
Category	Passenger Car		
Oil level	OK		
Registration Certificate Car (BE)	Yes		

Options

GPS storage	SD	Central consol F	
GPS storage		Luggage cover	
Windows electric F		Rear parking sensors	
Windows electric R		Type of Tow bar	No Tow bar
Cruise Control			
Steering wheel multifunctional			
Seats F heated			
Radio multimedia			
Type of headlighting	Headlighting Halogen		
Type of GPS	GPS big screen color		
Type of Lining	Lining artificial leather		
Type of climate control	Autom climate control		

Limited Technical Inspection

Airco functioning	OK	Battery functioning	Yes
Tires wear profile	OK	Power steering	Yes
Idle position	OK	Sound engine	OK
Engine startingtime	OK	Clutch test	OK
Exhaust gass	OK	Wiper fluid level	OK
Handbrake	OK	Transmission	OK
		Lighting	OK
		Wiperblades	OK

Degree of wear

225/55/18/102 V LightMetal				
Winter tyres:	Fr.L.	Michelin: 6 mm	Fr.R.	Michelin: 6 mm
	Re.L.	Michelin: 7 mm	Re.R.	Michelin: 7 mm

Assistance equipment

Emergency spare wheel	Yes	Jack	Yes
Number of charging cables (normal)	0		
Number of charging cables (rapid charge)	0		

Total cost ex VAT	1948,62
Door F L, Dent(s) and scratch(es), LI - Repair and paint (complete)	382,02



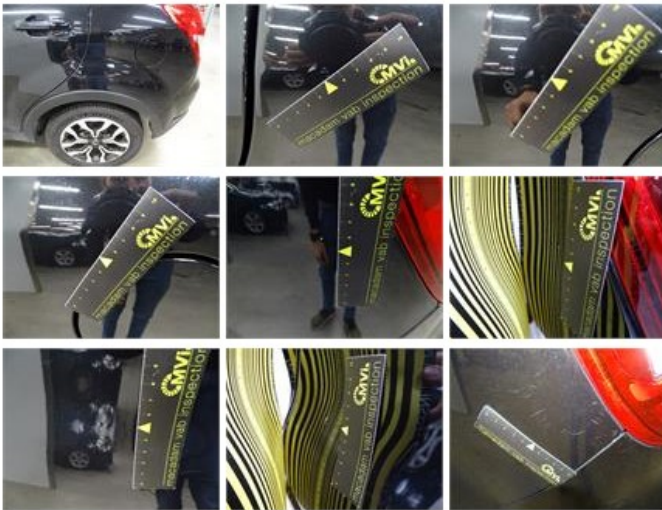
Door F R, Scratch(es), Acceptable 0,00

No pictures to display

Bumper R, Scratch(es), LI - Repair and paint (complete) 254,16



Wing R L, Dent(s) and scratch(es), LI - Repair and paint (complete) 369,84



Bumper F M, Dent(s) and scratch(es), Smart repair 110,64



Bumper F, Scratch(es), LI - Repair and paint (complete) 254,16





Wing trim R R, Scratch(es), Acceptable	0,00
<i>No pictures to display</i>	
Bonnet, Chemical polution, 67 - Polish	0,00
<i>No pictures to display</i>	
Wing F L, Scratch(es), Acceptable	0,00
<i>No pictures to display</i>	
Door R L, Scratch(es), Acceptable	0,00
<i>No pictures to display</i>	
Roof, Chemical polution, LI - Repair and paint (complete)	577,80



Door R R, Scratch(es), Acceptable	0,00
<i>No pictures to display</i>	
Tailgate, Scratch(es), Acceptable	0,00
<i>No pictures to display</i>	
Wing R R, Scratch(es), Acceptable	0,00
<i>No pictures to display</i>	