



PEUGEOT 5008: 1KSE046

Vinnumber:	VF30EBHXMFS145781	Versionname:	1.6 BLUEHDI 5&S 85KW ALLURE
First Registrationdate:	22/06/2015	Fiscalpower:	
Expertise Mileage:	207464	Power Kw:	85
Bodytype:		Body color:	Blue
Gearbox:	MAN 6 VIT	Paint type:	Metalic
Transmission:	Front	Rims summer:	Aluminium
Fueltype:	Diesel	Oil level:	OK
Battery functioning:	Yes	Parking lot:	2528
Number of doors:	5		
Number of seats:	7		
Number head rests:	7		
Rims summer:	Aluminium		
Category:	Passenger Car		
Oil level:	OK		
Registration Certificate Car (BE):	Yes		

Options

Radio CD		Panoramic roof	
GPS storage	HD	Central consol F	
GPS storage		Luggage cover	
Windows electric F		Front parking sensors	
Windows electric R		Rear parking sensors	
Cruise Control		Type of Tow bar	Tow bar removable
Radio multimedia			
Type of headlighting	Headlighting Halogen		
Type of GPS	GPS big screen color		
Type of Lining	Lining fabrics		
Type of climate control	Autom climate control		

Limited Technical Inspection

Airco functioning	OK	Battery functioning	Yes
Tires wear profile	OK	Power steering	Yes
Idle position	OK	Sound engine	OK
Engine startingtime	OK	Clutch test	OK
Exhaust gass	OK	Wiper fluid level	OK
Handbrake	OK	Transmission	OK
		Lighting	OK
		Wiperblades	OK

Degree of wear

215/50/17/95 V LightMetal				
Winter tyres:	Fr.L.	Michelin: 6 mm	Fr.R.	Michelin: 6 mm
	Re.L.	Continental: 5 mm	Re.R.	Continental: 5 mm

Assistance equipment

Repair kit	Yes	Compressor	Yes
Number of charging cables (normal)	0		
Number of charging cables (rapid charge)	0		

Total cost ex VAT	1918,23
--------------------------	----------------

Windscreen, Scratch(es), Acceptable	0,00
--	-------------



Wing R L, Dent(s) and scratch(es), LI - Repair and paint (complete) 308,20



Roof, Dent(s), Acceptable 0,00

No pictures to display

Wing R R, Dent(s) and scratch(es), LI - Repair and paint (complete) 308,20



Armrest F Mid, Worn, Acceptable 0,00



Gear shift lever knob, Worn, Acceptable 0,00

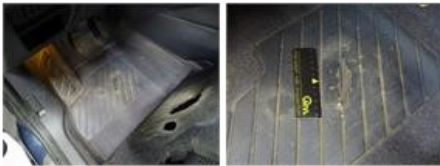


Alloy rim R R, Scratch(es), LI - Repair and paint (complete) 95,00



Alloy rim F R, Scratch(es), LI - Repair and paint (complete) 95,00





Bumper R, Scratch(es), LI - Repair and paint (complete)

211,80



Bumper F, Scratch(es), LI - Repair and paint (complete)

211,80



Door R L, Scratch(es), Acceptable

0,00

No pictures to display

Bonnet, Stone chip(s), Acceptable

0,00

No pictures to display

Alloy rim R L, Scratch(es), LI - Repair and paint (complete)

95,00



Rocker panel inner R L, Dent(s), LI - Repair and paint (complete)

115,56



Alloy rim F L, Scratch(es), LI - Repair and paint (complete)

95,00





Door F R, Scratch(es), Acceptable 0,00

No pictures to display

Door F L, Dent(s) and scratch(es), LI - Repair and paint (complete) 318,35



Ignition key, Worn, Acceptable 0,00

No pictures to display

Door R R, Scratch(es), Acceptable 0,00

No pictures to display