



VOLVO V40: 1HYB098

Vinnumber:	VV1MV8488F2208791	Versionname:	V40 D2 Base Powershift 115PK Aut.
First Registrationdate:	27/10/2014	Fiscalpower:	
Expertise Mileage:	87527	Power Kw:	84
Bodytype:		Body color:	Black
Gearbox:	Automatic	Paint type:	Metalic
Transmission:	Front	Rims summer:	Aluminium
Fueltype:	Diesel	Oil level:	OK
Battery functioning:	Yes	Parking lot:	2403
Number of doors:	5		
Number of seats:	5		
Number head rests:	5		
Rims summer:	Aluminium		
Category:	Passenger Car		
Oil level:	OK		
Registration Certificate Car (BE):	Yes		

Options

Radio CD	Central consol F
Windows electric F	Luggage cover
Windows electric R	Rear parking sensors
Cruise Control	Type of Tow bar
Steering wheel multifunctional	No Tow bar
Radio multimedia	
Type of headlighting	Headlighting Halogen
Type of GPS	GPS big screen color
Type of Lining	Lining fabrics
Type of climate control	Manual climate control

Limited Technical Inspection

Airco functioning	OK	Battery functioning	Yes
Tires wear profile	OK	Power steering	Yes
Idle position	OK	Sound engine	OK
Engine startingtime	OK	Clutch test	OK
Exhaust gass	OK	Wiper fluid level	OK
Handbrake	OK	Transmission	OK
		Lighting	OK
		Wiperblades	OK

Degree of wear

	205/55/16/91 V LightMetal			
Summer tyres:	Fr.L.	Michelin: 5 mm	Fr.R.	Michelin: 5 mm
	Re.L.	Michelin: 5 mm	Re.R.	Michelin: 5 mm

Assistance equipment

Repair kit	Yes	Compressor	Yes
Number of charging cables (normal)	0		
Number of charging cables (rapid charge)	0		

Total cost ex VAT	1132,14
Bonnet, Chemical polution, LI - Repair and paint (complete)	290,08



Rear spoiler, Chemical polution, LI - Repair and paint (complete) 115,56



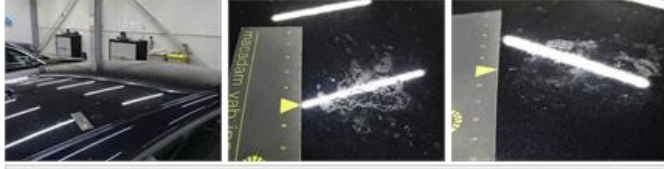
Alloy rim F R, Scratch(es), LI - Repair and paint (complete) 95,00



Ignition key, Missing, E - Replace 150,00

No pictures to display

Roof, Chemical polution, LI - Repair and paint (complete) 481,50



Bumper R, Scratch(es), Acceptable 0,00

No pictures to display

Door F L, Scratch(es), Acceptable 0,00

No pictures to display