


**VOLKSWAGEN Touran: 1JAL720**

Vinnumber:	<b>WVGZZZ1TZFW012392</b>	Versionname:	<b>TOURAN Trendline BMT St&amp;St 7pl.105PK</b>
First Registrationdate:	<b>18/11/2014</b>	Fiscalpower:	
Expertise Mileage:	<b>164710</b>	Power Kw:	<b>77</b>
Bodytype:		Body color:	<b>Black</b>
Gearbox:	<b>MAN 6 VIT</b>	Paint type:	<b>Metalic</b>
Transmission:	<b>Front</b>	Rims summer:	<b>Aluminium</b>
Fueltype:	<b>Diesel</b>	Oil level:	<b>OK</b>
Battery functioning:	<b>Yes</b>	Parking lot:	<b>4405</b>
Number of doors:	<b>5</b>		
Number of seats:	<b>7</b>		
Number head rests:	<b>7</b>		
Rims summer:	<b>Aluminium</b>		
Category:	<b>Passenger Car</b>		
Oil level:	<b>OK</b>		
Registration Certificate Car (BE):	<b>Yes</b>		

**Options**

Radio CD		Central consol F	
GPS storage		Luggage cover	
GPS storage	<b>HD</b>	Rear parking sensors	
Windows electric F		Type of Tow bar	<b>No Tow bar</b>
Windows electric R			
Cruise Control			
Steering wheel multifunctional			
Radio multimedia			
Type of headlighting	<b>Headlighting Halogen</b>		
Type of GPS	<b>GPS big screen color</b>		
Type of Lining	<b>Lining fabrics</b>		
Type of climate control	<b>Autom climate control</b>		

**Limited Technical Inspection**

Airco functioning	<b>OK</b>	Battery functioning	<b>Yes</b>
Tires wear profile	<b>OK</b>	Power steering	<b>Yes</b>
Idle position	<b>OK</b>	Sound engine	<b>OK</b>
Engine startingtime	<b>OK</b>	Clutch test	<b>OK</b>
Exhaust gass	<b>OK</b>	Wiper fluid level	<b>OK</b>
Handbrake	<b>OK</b>	Transmission	<b>OK</b>
		Lighting	<b>OK</b>
		Wiperblades	<b>OK</b>

**Degree of wear**

	<b>205/55/16/91 V LightMetal</b>			
Summer tyres:	Fr.L.	<b>Michelin: 3 mm</b>	Fr.R.	<b>Michelin: 3 mm</b>
	Re.L.	<b>Michelin: 5 mm</b>	Re.R.	<b>Michelin: 5 mm</b>

**Assistance equipment**

Repair kit	<b>Yes</b>	Compressor	<b>Yes</b>
Number of charging cables (normal)	<b>0</b>		
Number of charging cables (rapid charge)	<b>0</b>		

Total cost ex VAT	2835,61
Door R L, Dent(s) and scratch(es), Acceptable	0,00
<i>No pictures to display</i>	
Alloy rim F L polished, Scratch(es), LI - Repair and paint (complete)	95,00



Door F R, Scratch(es), Acceptable 0,00

No pictures to display

Bumper F, Dent(s) and scratch(es), LI - Repair and paint (complete) 211,80



Roof, Chemical polution, LI - Repair and paint (complete) 481,50



Alloy rim R L polished, Scratch(es), LI - Repair and paint (complete) 95,00



Alloy rim F R polished, Scratch(es), LI - Repair and paint (complete) 95,00



Bumper R, Dent(s) and scratch(es), LI - Repair and paint (complete) 211,80



Alloy rim R R polished, Scratch(es), LI - Repair and paint (complete)

95,00



Wing R L, Dent(s) and scratch(es), LI - Repair and paint (complete)

308,20



Bumper grille, Deformed / Strained, Acceptable

0,00



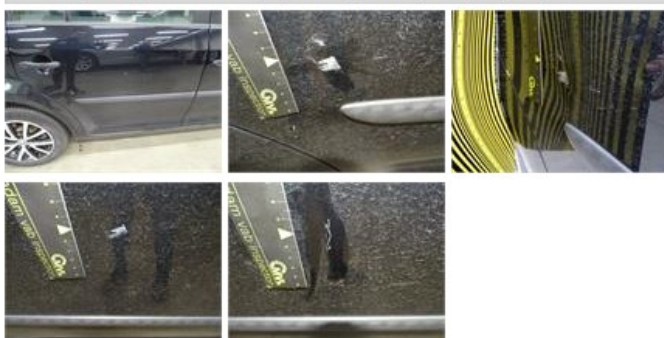
Moulding windscreen L, Damaged, Acceptable

0,00



Door R R, Dent(s) and scratch(es), LI - Repair and paint (complete)

318,35



Bonnet, Chemical polution, LI - Repair and paint (complete)

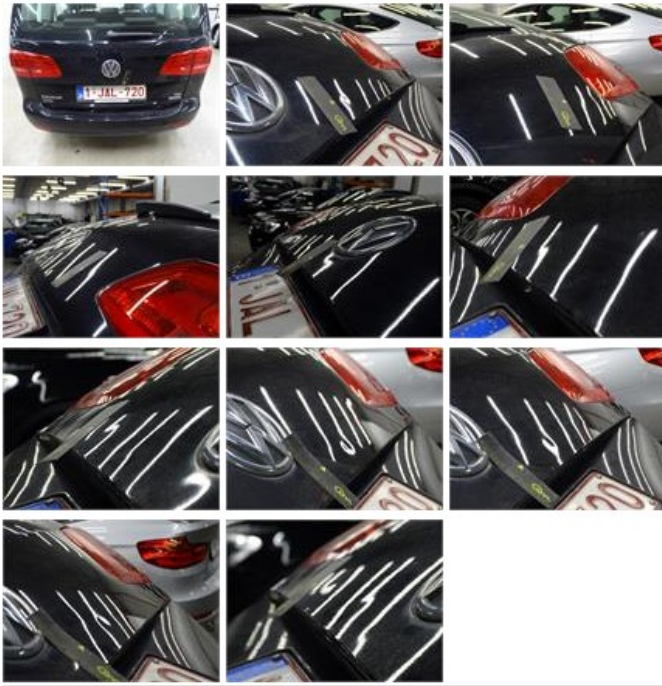
290,08



Rearview mirror housing R, Scratch(es), Acceptable 0,00



Tailgate, Dent(s), LI - Repair and paint (complete) 301,68



Door F L, Dent(s) and scratch(es), Acceptable 0,00

No pictures to display

Seat cover R L, Worn, Acceptable 0,00



Wing R R, Dent(s) and scratch(es), LI - Repair and paint (complete) 308,20



Seat cover F R, Unclashed, Repair/replace (lump sum) 24,00

