



**RENAULT CLIO: 1LPP435**

Vinnumber:	<b>VF15R0J0A54118336</b>	Versionname:	<b>1.5 ENERGY DCI 90E EXPRESSION</b>
First Registrationdate:	<b>6/11/2015</b>	Fiscalpower:	
Expertise Mileage:	<b>87160</b>	Power Kw:	<b>66</b>
Bodytype:		Body color:	<b>Grey</b>
Gearbox:	<b>MAN 6 VIT</b>	Paint type:	<b>Metalic</b>
Transmission:	<b>Front</b>	Rims summer:	<b>Steel</b>
Fueltype:	<b>Diesel</b>	Oil level:	<b>OK</b>
Maintenance:	<b>OK</b>	Parking lot:	<b>4326</b>
Battery functioning:	<b>Yes</b>		
Number of doors:	<b>5</b>		
Number of seats:	<b>5</b>		
Number head rests:	<b>5</b>		
Rims summer:	<b>Steel</b>		
Category:	<b>Passenger Car</b>		
Oil level:	<b>OK</b>		
Registration Certificate Car (BE):	<b>Yes</b>		

**Options**

GPS storage	<b>HD</b>	Luggage cover
GPS storage		
Windows electric F		
Cruise Control		
Steering wheel multifunctional		
Radio multimedia		
Type of headlighting	<b>Headlighting Halogen</b>	
Type of GPS	<b>GPS big screen color</b>	
Type of Lining	<b>Lining fabrics</b>	
Type of climate control	<b>Manual climate control</b>	

**Limited Technical Inspection**

Airco functioning	<b>OK</b>	Battery functioning	<b>Yes</b>
Tires wear profile	<b>OK</b>	Power steering	<b>Yes</b>
Idle position	<b>OK</b>	Sound engine	<b>OK</b>
Engine startingtime	<b>OK</b>	Clutch test	<b>OK</b>
Exhaust gass	<b>OK</b>	Wiper fluid level	<b>OK</b>
Handbrake	<b>OK</b>	Transmission	<b>OK</b>
		Lighting	<b>OK</b>
		Wiperblades	<b>OK</b>

**Degree of wear**

	<b>185/65/15/92 V Steel</b>			
Winter tyres:	Fr.L.	<b>Michelin: 4 mm</b>	Fr.R.	<b>Michelin: 4 mm</b>
	Re.L.	<b>Michelin: 6 mm</b>	Re.R.	<b>Michelin: 6 mm</b>

**Assistance equipment**

Total cost ex VAT	<b>2050,67</b>
Wing R L, Scratch(es), Acceptable	<b>0,00</b>



Wheel cover R L, Scratch(es), Acceptable

0,00



Tailgate, Dent(s) and scratch(es), Le - Replace and paint

846,92



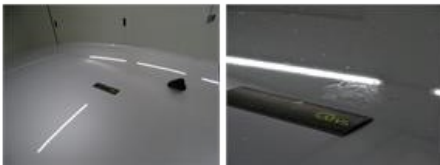
Wheel cover F R, Scratch(es), E - Replace

24,00



Roof, Chemical polution, 67 - Polish

0,00



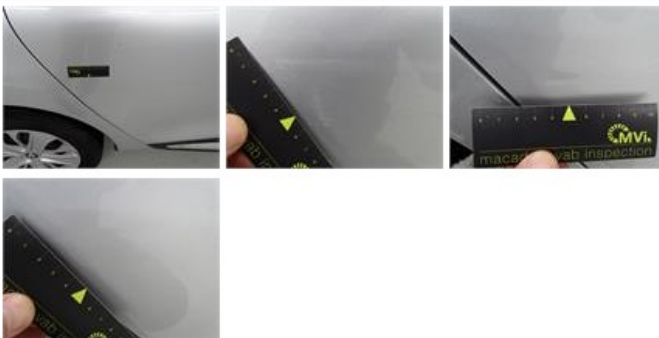
Wheel cover R R, Scratch(es), E - Replace

24,00



Door R R, Dent(s) and scratch(es), LI - Repair and paint (complete)

254,68



Door R L, Scratch(es), Acceptable

0,00



Wing R R, Dent(s) and scratch(es), LI - Repair and paint (complete)

246,56



Instrument panel complete, Scratch(es), E - Replace 58,31



Aerial, Missing, E - Replace 12,00



Bumper R, Dent(s) and scratch(es), Le - Replace and paint 535,20



Bonnet, Dent(s), Acceptable 0,00



Ceiling, Dirty, Cleaning 25,00



Wheel cover F L, Scratch(es), E - Replace 24,00

