



**MERCEDES C BERLINE: 1KTX819**

Vinnumber:	<b>WDD2050361R082250</b>	Versionname:	<b>1.6 C 180 BLUETEC AVANTGARDE</b>
First Registrationdate:	<b>2/07/2015</b>	Fiscalpower:	
Expertise Mileage:	<b>182985</b>	Power Kw:	<b>85</b>
Bodytype:		Body color:	<b>Black</b>
Gearbox:	<b>MAN 6 VIT</b>	Paint type:	<b>Metalic</b>
Transmission:	<b>Back</b>	Rims summer:	<b>Aluminium</b>
Fueltype:	<b>Diesel</b>	Oil level:	<b>OK</b>
Battery functioning:	<b>Yes</b>	Parking lot:	<b>3331</b>
Number of doors:	<b>4</b>		
Number of seats:	<b>5</b>		
Number head rests:	<b>5</b>		
Rims summer:	<b>Aluminium</b>		
Category:	<b>Passenger Car</b>		
Oil level:	<b>OK</b>		
Registration Certificate Car (BE):	<b>Yes</b>		

**Options**

Radio CD		Central consol F	
GPS storage	<b>HD</b>	Front parking sensors	
GPS storage		Rear parking sensors	
Windows electric F		Type of Tow bar	<b>No Tow bar</b>
Windows electric R			
Cruise Control			
Steering wheel multifunctional			
Radio multimedia			
Type of headlighting	<b>Headlighting Halogen</b>		
Type of GPS	<b>GPS big screen color</b>		
Type of Lining	<b>Lining semi-leather</b>		
Type of climate control	<b>Autom climate control</b>		
Head-up Display			

**Limited Technical Inspection**

Airco functioning	<b>OK</b>	Battery functioning	<b>Yes</b>
Tires wear profile	<b>OK</b>	Power steering	<b>Yes</b>
Idle position	<b>OK</b>	Sound engine	<b>OK</b>
Engine startingtime	<b>OK</b>	Clutch test	<b>OK</b>
Exhaust gass	<b>OK</b>	Wiper fluid level	<b>OK</b>
Handbrake	<b>OK</b>	Transmission	<b>OK</b>
		Lighting	<b>OK</b>
		Wiperblades	<b>OK</b>

**Degree of wear**

<b>225/50/17/98 V LightMetal</b>				
Winter tyres:	Fr.L.	<b>Goodyear: 6 mm</b>	Fr.R.	<b>Goodyear: 6 mm</b>
	Re.L.	<b>Goodyear: 3 mm</b>	Re.R.	<b>Goodyear: 3 mm</b>

**Assistance equipment**

Repair kit	<b>Yes</b>	Compressor	<b>Yes</b>
Number of charging cables (normal)	<b>0</b>		
Number of charging cables (rapid charge)	<b>0</b>		

<b>Total cost ex VAT</b>	<b>2123,41</b>
<b>Bumper F, Scratch(es), LI - Repair and paint (complete)</b>	<b>211,80</b>



Bumper R, Scratch(es), LI - Repair and paint (complete) 211,80



Wing R R, Dent(s) and scratch(es), LI - Repair and paint (complete) 308,20



Alloy rim R L, Scratch(es), Acceptable 0,00

No pictures to display

Door R L, Scratch(es), Acceptable 0,00

No pictures to display

Roof, Chemical polution, LI - Repair and paint (complete) 481,50





Wing R L, Dent(s) and scratch(es), Acceptable 0,00

No pictures to display

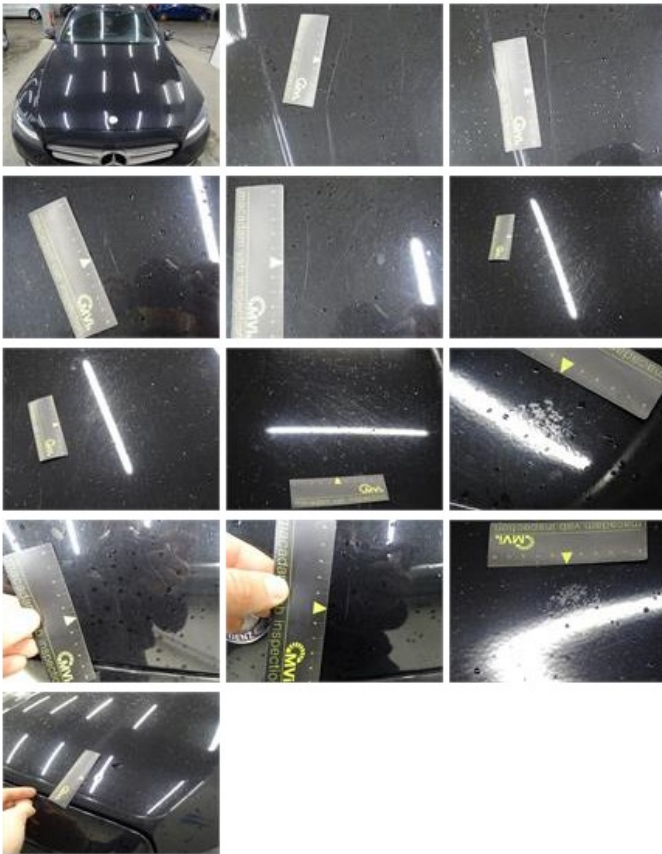
Roof pillar L, Scratch(es), Acceptable 0,00

No pictures to display

Door F L, Dent(s) and scratch(es), LI - Repair and paint (complete) 318,35



Bonnet, Scratch(es), LI - Repair and paint (complete) 290,08



Wing F R, Scratch(es), Acceptable 0,00

No pictures to display

Gear shift lever knob, Worn, Acceptable 0,00

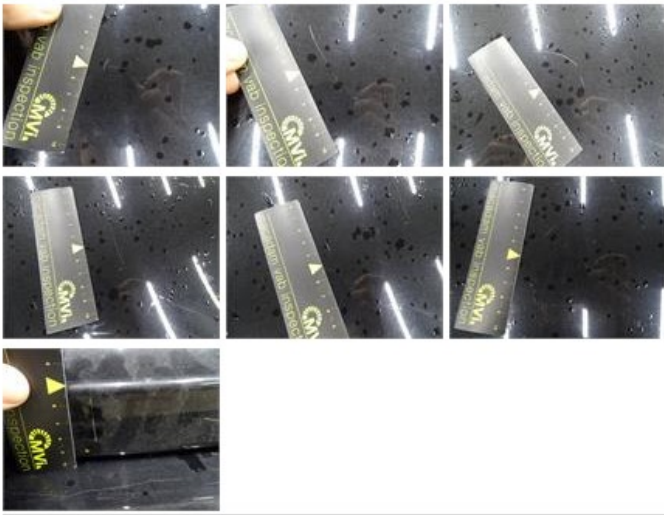


Door R R, Scratch(es), Acceptable 0,00

No pictures to display

Tailgate, Scratch(es), LI - Repair and paint (complete) 301,68





Door F R, Scratch(es), Acceptable 0,00

*No pictures to display*