



MERCEDES C BREAK: 1LEJ507

Vinnnummer:	WDD2052371F266377	Versionname:	1.6 C 200 D
First Registrationdate:	4/09/2015	Fiscalpower:	
Expertise Mileage:	99164	Power Kw:	100
Bodytype:		Body color:	Blue
Gearbox:	MAN 6 VIT	Paint type:	Metalic
Transmission:	Back	Rims summer:	Aluminium
Fueltype:	Diesel	Oil level:	OK
Battery functioning:	Yes	Parking lot:	2633
Number of doors:	5		
Number of seats:	5		
Number head rests:	5		
Rims summer:	Aluminium		
Category:	Passenger Car		
Oil level:	OK		
Registration Certificate Car (BE):	Yes		

Options

Radio CD		Central consol F	
GPS storage		Luggage cover	
GPS storage	SD	Front parking sensors	
Windows electric F		Rear parking sensors	
Windows electric R		Type of Tow bar	Tow bar removable
Cruise Control			
Steering wheel multifunctional			
Radio multimedia			
Type of headlighting	Headlighting Halogen		
Type of GPS	GPS big screen color		
Type of Lining	Lining fabrics		
Type of climate control	Autom climate control		

Limited Technical Inspection

Airco functioning	OK	Battery functioning	Yes
Tires wear profile	OK	Power steering	Yes
Idle position	OK	Sound engine	OK
Engine startingtime	OK	Clutch test	OK
Exhaust gass	OK	Wiper fluid level	OK
Handbrake	OK	Transmission	OK
		Lighting	OK
		Wiperblades	OK

Degree of wear

205/60/16/92 V LightMetal				
Summer tyres:	Fr.L.	Michelin: 3 mm	Fr.R.	Michelin: 3 mm
	Re.L.	Michelin: 3 mm	Re.R.	Michelin: 3 mm

Assistance equipment

Repair kit	Yes	Compressor	Yes
Number of charging cables (normal)	0		
Number of charging cables (rapid charge)	0		

Total cost ex VAT	1207,15
Wing R R, Scratch(es), LI - Repair and paint (complete)	308,20



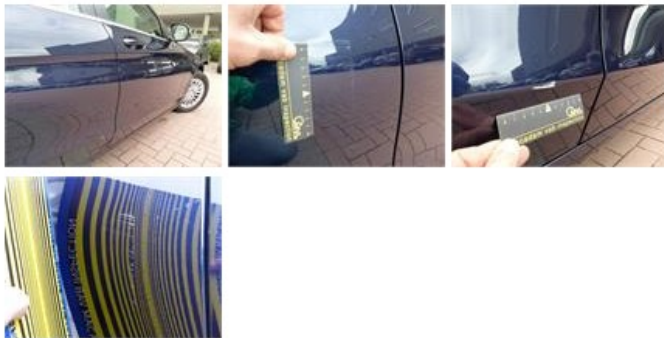
Interior, Dirty, Cleaning

25,00



Door R R, Dent(s) and scratch(es), LI - Repair and paint (complete)

318,35



Alloy rim R R, Scratch(es), Acceptable

0,00



Bumper R, Scratch(es), LI - Repair and paint (complete)

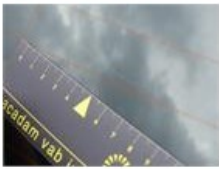
211,80



Rear window, Scratch(es), E - Replace

0,00





Tyre R R, Tear, E - Replace

132,00



Bumper F, Scratch(es), LI - Repair and paint (complete)

211,80



Wing R R, Dent(s), Acceptable

0,00



Wing F R, Scratch(es), Acceptable

0,00



Wing R R, Repaired, P - Check

0,00

