



BMW 1 HATCH: 1TBK900

Vinnumber:	WBA1V51040V998784	Versionname:	114d (70 kW)
First Registrationdate:	14/09/2017	Fiscalpower:	
Expertise Mileage:	66698	Power Kw:	70
Bodytype:		Body color:	Black
Gearbox:	MAN 6 VIT	Paint type:	Metalic
Transmission:	Back	Rims summer:	Aluminium
Fueltype:	Diesel	Oil level:	OK
Battery functioning:	Yes	Parking lot:	2210
Number of doors:	5		
Number of seats:	5		
Number head rests:	5		
Rims summer:	Aluminium		
Category:	Passenger Car		
Oil level:	OK		
Registration Certificate Car (BE):	Yes		

Options

Radio CD		Central consol F	
GPS storage	HD	Luggage cover	
GPS storage		Rear parking sensors	
Windows electric F		Type of Tow bar	No Tow bar
Windows electric R			
Radio multimedia			
Type of headlighting	Headlighting Halogen		
Type of GPS	GPS big screen color		
Type of Lining	Lining fabrics		
Type of climate control	Autom climate control		

Limited Technical Inspection

Airco functioning	OK	Battery functioning	Yes
Tires wear profile	OK	Power steering	Yes
Idle position	OK	Sound engine	OK
Engine startingtime	OK	Clutch test	OK
Exhaust gass	OK	Wiper fluid level	OK
Handbrake	OK	Transmission	OK
		Lighting	OK
		Wiperblades	OK

Degree of wear

205/55/16/91 H LightMetal			
Winter tyres:	Fr.L.	Fr.R.	Michelin: 5 mm
	Re.L.	Re.R.	Michelin: 4 mm

Assistance equipment

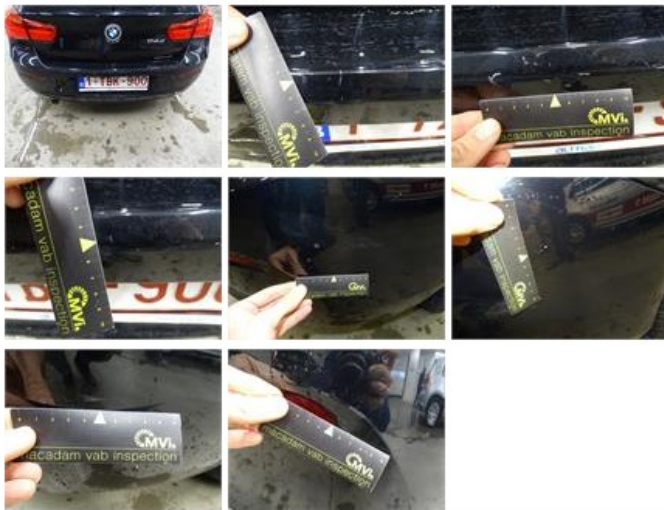
Repair kit	Yes	Compressor	Yes
Number of charging cables (normal)	0		
Number of charging cables (rapid charge)	0		

Total cost ex VAT	1016,60
Bonnet, Chemical polution, 67 - Polish	0,00
<i>No pictures to display</i>	
Alloy rim R L, Scratch(es), LI - Repair and paint (complete)	95,00



Bumper R, Scratch(es), LI - Repair and paint (complete)

211,80



Alloy rim F L, Scratch(es), LI - Repair and paint (complete)

95,00



Door F R, Scratch(es), Acceptable

0,00

No pictures to display

Alloy rim R R, Scratch(es), LI - Repair and paint (complete)

95,00



Bumper F, Scratch(es), LI - Repair and paint (complete)

211,80




Certificate Of Conformity, Missing, E - Replace

150,00

No pictures to display

Tailgate, Dent(s) and scratch(es), Acceptable

0,00

Wing(s), Dent(s), and Scratch(es), Acceptable	0,00
<i>No pictures to display</i>	
Roof, Chemical polution, 67 - Polish	0,00
<i>No pictures to display</i>	
Door F L, Scratch(es), Acceptable	0,00
<i>No pictures to display</i>	
Rear window, Scratch(es), Acceptable	0,00
	
Wing F R, Scratch(es), Acceptable	0,00
<i>No pictures to display</i>	
Wing R R, Scratch(es), 67 - Polish	0,00
<i>No pictures to display</i>	
Alloy rim F R, Scratch(es), LI - Repair and paint (complete)	95,00



Door R R, Dent(s), PDR - Paintless dent repair	63,00
	