



**BMW 3 BERLINE: 1LPA619**

Vinnumber:	<b>WBA8F91000K439740</b>	Versionname:	<b>2.0 316D (85KW) BERLINE</b>
First Registrationdate:	<b>3/11/2015</b>	Fiscalpower:	
Expertise Mileage:	<b>93774</b>	Power Kw:	<b>85</b>
Bodytype:	<b>Berline</b>	Body color:	<b>Blue</b>
Gearbox:	<b>MAN 6 VIT</b>	Paint type:	<b>Metalic</b>
Transmission:	<b>Back</b>	Rims summer:	<b>Aluminium</b>
Fueltype:	<b>Diesel</b>	Oil level:	<b>OK</b>
Battery functioning:	<b>Yes</b>	Parking lot:	<b>4431</b>
Number of doors:	<b>4</b>		
Number of seats:	<b>5</b>		
Number head rests:	<b>5</b>		
Rims summer:	<b>Aluminium</b>		
Category:	<b>Passenger Car</b>		
Oil level:	<b>OK</b>		
Registration Certificate Car (BE):	<b>Yes</b>		

**Options**

Radio CD	Central consol F
Windows electric F	Rear parking sensors
Windows electric R	
Cruise Control	
Steering wheel multifunctional	
Radio multimedia	
Type of headlighting	<b>Headlighting Halogen</b>
Type of GPS	<b>GPS big screen color</b>
Type of Lining	<b>Lining artificial leather</b>
Type of climate control	<b>Autom climate control</b>

**Limited Technical Inspection**

Airco functioning	<b>OK</b>	Battery functioning	<b>Yes</b>
Tires wear profile	<b>OK</b>	Power steering	<b>Yes</b>
Idle position	<b>OK</b>	Sound engine	<b>OK</b>
Engine startingtime	<b>OK</b>	Clutch test	<b>OK</b>
Exhaust gass	<b>OK</b>	Wiper fluid level	<b>OK</b>
Handbrake	<b>OK</b>	Transmission	<b>OK</b>
		Lighting	<b>OK</b>
		Wiperblades	<b>OK</b>

**Degree of wear**

	<b>205/60/16/92 W LightMetal</b>			
Summer tyres:	Fr.L.	<b>Bridgestone: 7 mm</b>	Fr.R.	<b>Bridgestone: 7 mm</b>
	Re.L.	<b>Bridgestone: 6 mm</b>	Re.R.	<b>Bridgestone: 6 mm</b>

**Assistance equipment**

Repair kit	<b>Yes</b>	Compressor	<b>Yes</b>
------------	------------	------------	------------

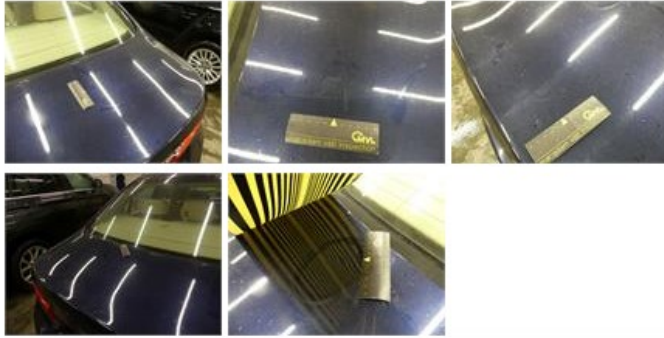
Total cost ex VAT	<b>1117,76</b>
Bonnet, Chemical polution, LI - Repair and paint (complete)	<b>290,08</b>





Tailgate, Scratch(es), LI - Repair and paint (complete)

301,68



Roof, Hail damage, PDR - Paintless dent repair

63,00



Wing R R, Dent(s), Acceptable

0,00

*No pictures to display*

Roof pillar L, Hail damage, PDR - Paintless dent repair

63,00



Alloy rim R R, Scratch(es), I - Repair

100,00



Alloy rim F R, Scratch(es), I - Repair

100,00



Alloy rim F L, Scratch(es), I - Repair

100,00



Alloy rim R L, Scratch(es), I - Repair

100,00



Mats, Stain, Acceptable

0,00

*No pictures to display*

Mats, Worn, Acceptable

0,00

*No pictures to display*