



**BMW 3 BERLINE: 1NCU784**

Vinnumber:	<b>WBA8C31090K705584</b>	Versionname:	<b>2.0 318D (110KW) BERLINE</b>
First Registrationdate:	<b>22/01/2016</b>	Fiscalpower:	
Expertise Mileage:	<b>149114</b>	Power Kw:	<b>110</b>
Bodytype:		Body color:	<b>Blue</b>
Gearbox:	<b>MAN 6 VIT</b>	Paint type:	<b>Metalic</b>
Transmission:	<b>Back</b>	Rims summer:	<b>Aluminium</b>
Fueltype:	<b>Diesel</b>	Oil level:	<b>OK</b>
Battery functioning:	<b>Yes</b>	Parking lot:	<b>3314</b>
Number of doors:	<b>4</b>		
Number of seats:	<b>5</b>		
Number head rests:	<b>5</b>		
Rims summer:	<b>Aluminium</b>		
Category:	<b>Passenger Car</b>		
Oil level:	<b>OK</b>		
Registration Certificate Car (BE):	<b>Yes</b>		

**Options**

Radio CD	Central consol F	
GPS storage	Rear parking sensors	
GPS storage	HD Type of Tow bar	<b>No Tow bar</b>
Windows electric F		
Windows electric R		
Cruise Control		
Steering wheel multifunctional		
Seats F heated		
Radio multimedia		
Type of headlighting	<b>Headlighting Halogen</b>	
Type of GPS	<b>GPS big screen color</b>	
Type of Lining	<b>Lining artificial leather</b>	
Type of climate control	<b>Autom climate control</b>	

**Limited Technical Inspection**

Airco functioning	<b>OK</b>	Battery functioning	<b>Yes</b>
Tires wear profile	<b>OK</b>	Power steering	<b>Yes</b>
Idle position	<b>OK</b>	Sound engine	<b>OK</b>
Engine startingtime	<b>OK</b>	Clutch test	<b>OK</b>
Exhaust gass	<b>OK</b>	Wiper fluid level	<b>OK</b>
Handbrake	<b>OK</b>	Transmission	<b>OK</b>
		Lighting	<b>OK</b>
		Wiperblades	<b>OK</b>

**Degree of wear**

<b>205/60/16/92 H LightMetal</b>				
Winter tyres:	Fr.L.	<b>Michelin: 4 mm</b>	Fr.R.	<b>Michelin: 4 mm</b>
	Re.L.	<b>Michelin: 4 mm</b>	Re.R.	<b>Michelin: 4 mm</b>

**Assistance equipment**

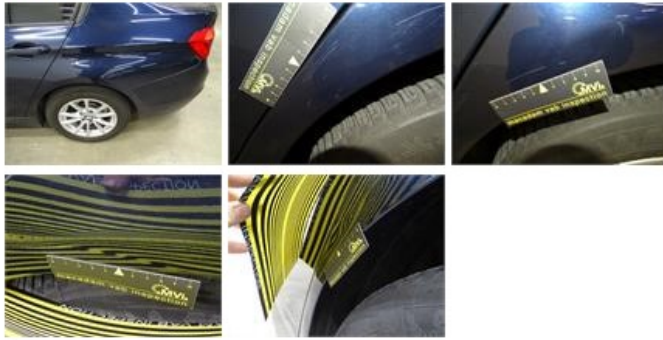
Repair kit	<b>Yes</b>	Compressor	<b>Yes</b>
Number of charging cables (normal)	<b>0</b>		
Number of charging cables (rapid charge)	<b>0</b>		

<b>Total cost ex VAT</b>	<b>1424,55</b>
<b>Windscreen, Repaired, Acceptable</b>	<b>0,00</b>



Wing R L, Dent(s) and scratch(es), LI - Repair and paint (complete)

308,20



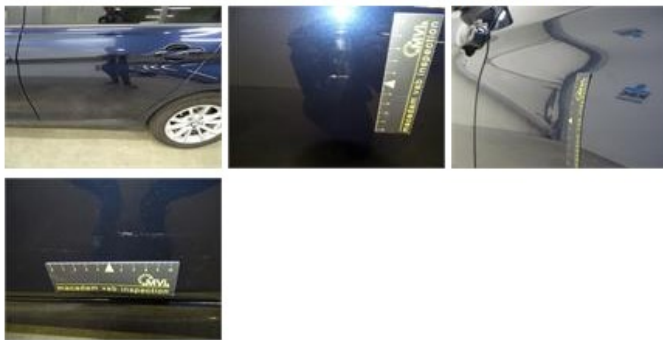
Door F L, Scratch(es), Acceptable

0,00

No pictures to display

Door R L, Dent(s) and scratch(es), LI - Repair and paint (complete)

318,35



Bumper F, Broken, Le - Replace and paint

735,00



Tailgate, Dent(s), Acceptable

0,00

No pictures to display

Wing F L, Scratch(es), Acceptable

0,00

No pictures to display

Door R R, Scratch(es), 67 - Polish

0,00

No pictures to display

Wing R R, Dent(s), PDR - Paintless dent repair

63,00



Door F R, Scratch(es), Acceptable

0,00

No pictures to display

Bumper R, Scratch(es), Acceptable

0,00

