



**BMW 2 GRAN TOURER: UJ9051**

Vinnumber:	<b>WBA2E510105C91052</b>	Versionname:	<b>2.0 218D (110KW) GRAN TOURER</b>
First Registrationdate:	<b>8/09/2015</b>	Fiscalpower:	
Expertise Mileage:	<b>183686</b>	Power Kw:	<b>110</b>
Bodytype:		Body color:	<b>Grey</b>
Gearbox:	<b>MAN 6 VIT</b>	Paint type:	<b>Metalic</b>
Transmission:	<b>Front</b>	Rims summer:	<b>Aluminium</b>
Fueltype:	<b>Diesel</b>	Oil level:	<b>OK</b>
Battery functioning:	<b>Yes</b>	Parking lot:	<b>3506</b>
Number of doors:	<b>5</b>		
Number of seats:	<b>5</b>		
Number head rests:	<b>5</b>		
Rims summer:	<b>Aluminium</b>		
Category:	<b>Passenger Car</b>		
Oil level:	<b>OK</b>		
Registration Certificate Car (BE):	<b>Yes</b>		

**Options**

Windows electric F	Central consol F
Windows electric R	Luggage cover
Cruise Control	Rear parking sensors
Steering wheel multifunctional	Type of Tow bar
Radio multimedia	<b>Tow bar fixed</b>
Type of headlighting	<b>Headlighting Halogen</b>
Type of GPS	<b>GPS big screen color</b>
Type of Lining	<b>Lining fabrics</b>
Type of climate control	<b>Autom climate control</b>

**Limited Technical Inspection**

Airco functioning	<b>OK</b>	Battery functioning	<b>Yes</b>
Tires wear profile	<b>OK</b>	Power steering	<b>Yes</b>
Idle position	<b>OK</b>	Sound engine	<b>OK</b>
Engine startingtime	<b>OK</b>	Clutch test	<b>OK</b>
Exhaust gass	<b>OK</b>	Wiper fluid level	<b>OK</b>
Handbrake	<b>OK</b>	Transmission	<b>OK</b>
		Lighting	<b>OK</b>
		Wiperblades	<b>OK</b>

**Degree of wear**

<b>205/60/16/92 V LightMetal</b>				
Summer tyres:	Fr.L.	<b>Michelin: 3 mm</b>	Fr.R.	<b>Michelin: 3 mm</b>
	Re.L.	<b>Michelin: 3 mm</b>	Re.R.	<b>Michelin: 3 mm</b>

**Assistance equipment**

Number of charging cables (normal)	<b>0</b>
Number of charging cables (rapid charge)	<b>0</b>

<b>Total cost ex VAT</b>	<b>1672,93</b>
<b>Wing R R, Dent(s) and scratch(es), LI - Repair and paint (complete)</b>	<b>308,20</b>



Roof, Chemical polution, LI - Repair and paint (complete)

481,50



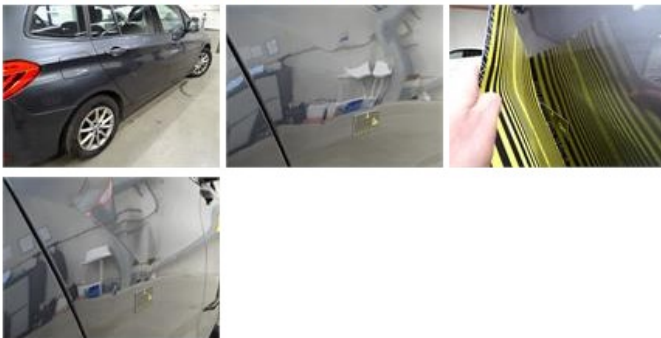
Door R L, Dent(s), PDR - Paintless dent repair

63,00



Door R R, Dent(s), LI - Repair and paint (complete)

318,35



Bonnet, Chemical polution, LI - Repair and paint (complete)

290,08



Alloy rim R R, Scratch(es), Acceptable

0,00

*No pictures to display*

Alloy rim F R, Scratch(es), Acceptable

0,00

*No pictures to display*

Bumper F, Scratch(es), LI - Repair and paint (complete)

211,80

