



MERCEDES CLA SHOOTING BRAKE: 1LFN881

Vinnumber:	WDD1179081N273329	Versionname:	2.1 CLA 200 CDI SHOOTING BRAKE
First Registrationdate:	15/09/2015	Fiscalpower:	
Expertise Mileage:	90949	Power Kw:	100
Bodytype:		Body color:	Grey
Gearbox:	Automatic	Paint type:	Metalic
Transmission:	Back	Rims summer:	Aluminium
Fueltype:	Diesel	Oil level:	OK
Maintenance:	OK	Parking lot:	2322
Maintenance:	AF IN 24300 KM		
Battery functioning:	Yes		
Number of doors:	5		
Number of seats:	5		
Number head rests:	5		
Rims summer:	Aluminium		
Category:	Passenger Car		
Oil level:	OK		
Registration Certificate Car (BE):	Yes		

Options

Radio CD		Central consol F
GPS storage	SD	Luggage cover
GPS storage		Front parking sensors
Windows electric F		Rear parking sensors
Windows electric R		
Cruise Control		
Steering wheel multifunctional		
Radio multimedia		
Type of headlighting	Headlighting Halogen	
Type of GPS	GPS big screen color	
Type of Lining	Lining semi-artificial leather	
Type of climate control	Manual climate control	

Limited Technical Inspection

Airco functioning	OK	Battery functioning	Yes
Tires wear profile	OK	Power steering	Yes
Idle position	OK	Sound engine	OK
Engine startingtime	OK	Clutch test	OK
Exhaust gass	OK	Wiper fluid level	OK
Handbrake	OK	Transmission	OK
		Lighting	OK
		Wiperblades	OK

Degree of wear

	205/55/16/91 H LightMetal			
Winter tyres:	Fr.L.	Kleber: 4 mm	Fr.R.	Kleber: 4 mm
	Re.L.	Kleber: 4 mm	Re.R.	Kleber: 4 mm

Assistance equipment

Repair kit	Yes	Compressor	Yes
Number of charging cables (normal)	0		
Number of charging cables (rapid charge)	0		

Total cost ex VAT	709,00
Door R R, Dent(s), PDR - Paintless dent repair	63,00



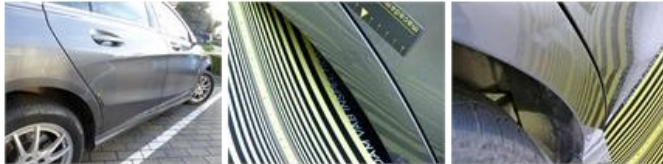
Roof pillar R, Dent(s), PDR - Paintless dent repair

63,00



Wing R R, Dent(s) and scratch(es), LI - Repair and paint (complete)

308,20



Roof pillar R, Dent(s), Acceptable

0,00

No pictures to display

Windscreen, Stone chip(s), Acceptable

0,00

No pictures to display

Door R R, Dent(s), Acceptable

0,00

No pictures to display

Bumper F, Scratch(es), LI - Repair and paint (complete)

211,80



Door R L, Dent(s), Acceptable

0,00

No pictures to display

Door F L, Dent(s), PDR - Paintless dent repair

63,00



Bumper R, Scratch(es), Acceptable

0,00

No pictures to display