



<b>Peugeot 508: 1UAV415</b>			
Vinnumber:	<b>VF38E9HLOCL089544</b>	Versionname:	
First Registrationdate:	<b>23/01/2013</b>	Fiscalpower:	<b>84</b>
Expertise Mileage:	<b>114583</b>	Power Kw:	
Bodytype:		Body color:	<b>Dark Brown</b>
Gearbox:	<b>MAN 5 VIT</b>	Paint type:	<b>Metalic</b>
Transmission:	<b>Front</b>	Rims summer:	<b>Aluminium</b>
Fueltype:	<b>Diesel</b>	Oil level:	<b>OK</b>
Battery functioning:	<b>Yes</b>	Parking lot:	<b>PARTICULIER</b>
Number of doors:	<b>5</b>		
Number of seats:	<b>5</b>		
Number head rests:	<b>5</b>		
Rims summer:	<b>Aluminium</b>		
Category:	<b>Passenger Car</b>		
Oil level:	<b>OK</b>		
Registration Certificate Car (BE):	<b>Yes</b>		

<b>Options</b>			
Radio CD		Panoramic roof	
Windows electric F		Central consol F	
Windows electric R		Luggage cover	
Cruise Control		Front parking sensors	
Steering wheel multifunctional		Rear parking sensors	
Radio multimedia		Type of Tow bar	<b>No Tow bar</b>
Type of headlighting	<b>Headlighting Halogen</b>		
Type of GPS	<b>GPS big screen color</b>		
Type of Lining	<b>Lining fabrics</b>		
Type of climate control	<b>Autom climate control</b>		

<b>Limited Technical Inspection</b>			
Airco functioning	<b>OK</b>	Battery functioning	<b>Yes</b>
Tires wear profile	<b>OK</b>	Power steering	<b>Yes</b>
Idle position	<b>OK</b>	Sound engine	<b>OK</b>
Engine startingtime	<b>OK</b>	Clutch test	<b>OK</b>
Exhaust gass	<b>OK</b>	Wiper fluid level	<b>OK</b>
Handbrake	<b>OK</b>	Transmission	<b>OK</b>
		Lighting	<b>OK</b>
		Wiperblades	<b>OK</b>

<b>Degree of wear</b>				
	<b>215/55/17/93 V LightMetal</b>			
Winter tyres:	Fr.L.	<b>Yokohama: 6 mm</b>	Fr.R.	<b>Yokohama: 6 mm</b>
	Re.L.	<b>Yokohama: 6 mm</b>	Re.R.	<b>Yokohama: 6 mm</b>

<b>Assistance equipment</b>			
Spare wheel	<b>Yes</b>	Jack	<b>Yes</b>
Number of charging cables (normal)	<b>0</b>		
Number of charging cables (rapid charge)	<b>0</b>		

<b>Total cost ex VAT</b>	<b>722,06</b>
<b>Bumper F, Scratch(es), LI - Repair and paint (complete)</b>	<b>211,80</b>



Bumper R, Scratch(es), Acceptable 0,00

No pictures to display

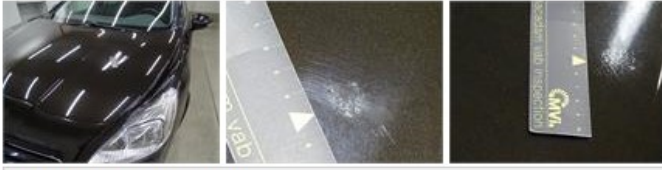
Wing F L, Dent(s) and scratch(es), LI - Repair and paint (complete) 220,18



Alloy Rims (all), Rust, Acceptable 0,00

No pictures to display

Bonnet, Chemical polution, LI - Repair and paint (complete) 290,08



Wing R L, Dent(s), Acceptable 0,00

No pictures to display

Rear window, Scratch(es), Acceptable 0,00

No pictures to display