



## SKODA Octavia: 1JEU348

Vinnumber:	<b>TMBJG7NE9F0115329</b>	Versionname:	<b>OCTAVIA COMBI Ambition 105PK</b>
First Registrationdate:	<b>27/11/2014</b>	Fiscalpower:	
Expertise Mileage:	<b>176063</b>	Power Kw:	<b>77</b>
Bodytype:	<b>Break</b>	Body color:	<b>Blue</b>
Gearbox:	<b>MAN 5 VIT</b>	Paint type:	<b>Metallic</b>
Transmission:	<b>Front</b>	Rims summer:	<b>Aluminium</b>
Fueltype:	<b>Diesel</b>	Oil level:	<b>OK</b>
Maintenance:	<b>OK</b>	Parking lot:	<b>3630</b>
Maintenance:	<b>BINNEN 4400 KM</b>		
Battery functioning:	<b>Yes</b>		
Number of doors:	<b>5</b>		
Number of seats:	<b>5</b>		
Number head rests:	<b>5</b>		
Rims summer:	<b>Aluminium</b>		
Category:	<b>Passenger Car</b>		
Oil level:	<b>OK</b>		
Registration Certificate Car (BE):	<b>Yes</b>		

## Options

GPS storage		Sun Roof electric	
GPS storage	<b>SD</b>	Panoramic roof	
Windows electric F		Central consol F	
Windows electric R		Luggage cover	
Cruise Control		Front parking sensors	
Steering wheel multifunctional		Rear parking sensors	
Seats F heated		Type of Tow bar	<b>Tow bar removable</b>
Radio multimedia			
Type of headlighting	<b>Headlighting Halogen</b>		
Type of GPS	<b>GPS big screen color</b>		
Type of Lining	<b>Lining fabrics</b>		
Type of climate control	<b>Autom climate control</b>		

## Limited Technical Inspection

Airco functioning	<b>OK</b>	Battery functioning	<b>Yes</b>
Tires wear profile	<b>OK</b>	Power steering	<b>Yes</b>
Idle position	<b>OK</b>	Sound engine	<b>OK</b>
Engine startingtime	<b>OK</b>	Clutch test	<b>OK</b>
Exhaust gass	<b>OK</b>	Wiper fluid level	<b>OK</b>
Handbrake	<b>OK</b>	Transmission	<b>OK</b>
		Lighting	<b>OK</b>
		Wiperblades	<b>OK</b>

## Degree of wear

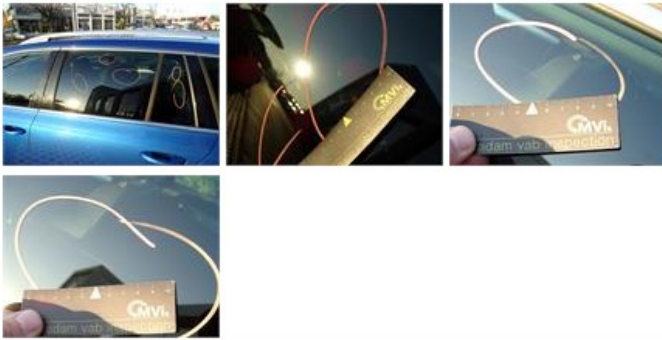
	<b>205/55/16/91 M-S LightMetal</b>			
Winter tyres:	Fr.L.	<b>Continental: 6 mm</b>	Fr.R.	<b>Continental: 6 mm</b>
	Re.L.	<b>Continental: 7 mm</b>	Re.R.	<b>Continental: 7 mm</b>

## Assistance equipment

Spare wheel	<b>Yes</b>	Jack	<b>Yes</b>
Total cost ex VAT			<b>318,35</b>
Bumper F, Scratch(es), Acceptable			<b>0,00</b>
<i>No pictures to display</i>			
Steering wheel, Worn, Acceptable			<b>0,00</b>
<i>No pictures to display</i>			

Window R L door, Scratch(es), E - Replace

0,00



Door R L, Scratch(es), Acceptable

0,00

No pictures to display

Window R L door, Scratch(es), E - Replace

0,00



Window F L door, Scratch(es), E - Replace

0,00



Bumper R, Scratch(es), Acceptable

0,00

No pictures to display

Rear window, Scratch(es), E - Replace

0,00



Wing F R, Repaired, Acceptable

0,00



Wing R R, Scratch(es), LI - Repair and paint (complete)

0,00



Door R R, Scratch(es), LI - Repair and paint (complete)

318,35

