



**RENAULT GRAND SCENIC: 1KTJ149**

Vinnumber:	<b>VF1JZ14P653366453</b>	Versionname:	<b>1.5 ENERGY DCI 110 LIMITED 7P</b>
First Registrationdate:	<b>30/06/2015</b>	Fiscalpower:	
Expertise Mileage:	<b>122833</b>	Power Kw:	<b>81</b>
Bodytype:		Body color:	<b>Grey</b>
Gearbox:	<b>MAN 6 VIT</b>	Paint type:	<b>Metalic</b>
Transmission:	<b>Front</b>	Rims summer:	<b>Aluminium</b>
Fueltype:	<b>Diesel</b>	Oil level:	<b>OK</b>
Maintenance:	<b>NOT OK</b>	Parking lot:	<b>1233</b>
Battery functioning:	<b>Yes</b>		
Number of doors:	<b>5</b>		
Number of seats:	<b>7</b>		
Number head rests:	<b>7</b>		
Rims summer:	<b>Aluminium</b>		
Category:	<b>Passenger Car</b>		
Oil level:	<b>OK</b>		
Registration Certificate Car (BE):	<b>Yes</b>		

**Options**

Radio CD		Central consol F	
GPS storage	<b>SD</b>	Luggage cover	
GPS storage		Rear parking sensors	
Windows electric F			
Windows electric R			
Cruise Control			
Steering wheel multifunctional			
Type of headlighting	<b>Headlighting Halogen</b>		
Type of GPS	<b>GPS big screen color</b>		
Type of Lining	<b>Lining fabrics</b>		
Type of climate control	<b>Autom climate control</b>		

**Limited Technical Inspection**

Airco functioning	<b>OK</b>	Battery functioning	<b>Yes</b>
Tires wear profile	<b>OK</b>	Power steering	<b>Yes</b>
Idle position	<b>OK</b>	Sound engine	<b>OK</b>
Engine startingtime	<b>OK</b>	Clutch test	<b>OK</b>
Exhaust gass	<b>OK</b>	Wiper fluid level	<b>OK</b>
Handbrake	<b>OK</b>	Transmission	<b>OK</b>
		Lighting	<b>OK</b>
		Wiperblades	<b>OK</b>

**Degree of wear**

	<b>205/60/16/92 H LightMetal</b>			
Summer tyres:	Fr.L.	<b>Michelin: 4 mm</b>	Fr.R.	<b>Michelin: 4 mm</b>
	Re.L.	<b>Michelin: 5 mm</b>	Re.R.	<b>Michelin: 5 mm</b>

**Assistance equipment**

Emergency spare wheel	<b>Yes</b>	Jack	<b>Yes</b>
-----------------------	------------	------	------------

Total cost ex VAT	<b>415,36</b>
-------------------	---------------

Wing R L, Dent(s), PDR - Paintless dent repair	<b>63,00</b>
--	--------------



Alloy rim F R, Scratch(es), Acceptable 0,00

No pictures to display

Maintenance, Maintenance, Execute 0,00

No pictures to display

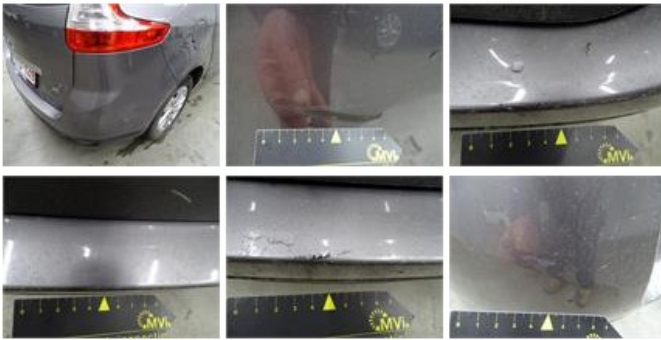
Rocker panel inner R L, Dent(s), LI - Repair and paint (complete) 115,56



Seat cover F L, Stain, Cleaning 25,00



Bumper R, Scratch(es), LI - Repair and paint (complete) 211,80



Bumper F R, Scratch(es), Acceptable 0,00

No pictures to display