



VOLKSWAGEN TOURAN: 1LTX126

| | | | |
|------------------------------------|--------------------------|--------------|---------------------------------------|
| Vinnumber: | WVGZZZ1TZGW518324 | Versionname: | 2.0 TDI SCR 110KW BMT HIGHLINE |
| First Registrationdate: | 3/12/2015 | Fiscalpower: | |
| Expertise Mileage: | 117323 | Power Kw: | 110 |
| Bodytype: | | Body color: | Black |
| Gearbox: | MAN 6 VIT | Paint type: | Metalic |
| Transmission: | Front | Rims summer: | Aluminium |
| Fueltype: | Diesel | Oil level: | OK |
| Maintenance: | 28000 KM | Parking lot: | 3118 |
| Maintenance: | OK | | |
| Battery functioning: | Yes | | |
| Number of doors: | 5 | | |
| Number of seats: | 7 | | |
| Number head rests: | 7 | | |
| Rims summer: | Aluminium | | |
| Category: | Passenger Car | | |
| Oil level: | OK | | |
| Registration Certificate Car (BE): | Yes | | |

Options

| | | | |
|--------------------------------|------------------------------|-----------------------|-------------------|
| GPS storage | SD | Central consol F | |
| GPS storage | | Luggage cover | |
| Windows electric F | | Front parking sensors | |
| Windows electric R | | Rear parking sensors | |
| Cruise Control | | Type of Tow bar | No Tow bar |
| Steering wheel multifunctional | | | |
| Seats F heated | | | |
| Radio multimedia | | | |
| Type of headlighting | Headlighting Halogen | | |
| Type of GPS | GPS big screen color | | |
| Type of Lining | Lining semi-Alcantara | | |
| Type of climate control | Autom climate control | | |

Limited Technical Inspection

| | | | |
|---------------------|-----------|---------------------|------------|
| Airco functioning | OK | Battery functioning | Yes |
| Tires wear profile | OK | Power steering | Yes |
| Idle position | OK | Sound engine | OK |
| Engine startingtime | OK | Clutch test | OK |
| Exhaust gass | OK | Wiper fluid level | OK |
| Handbrake | OK | Transmission | OK |
| | | Lighting | OK |
| | | Wiperblades | OK |

Degree of wear

| | | | | |
|----------------------------------|-------|-----------------------|-------|-----------------------|
| 215/55/17/98 V LightMetal | | | | |
| Winter tyres: | Fr.L. | Uniroyal: 8 mm | Fr.R. | Uniroyal: 8 mm |
| | Re.L. | Uniroyal: 8 mm | Re.R. | Uniroyal: 8 mm |

Assistance equipment

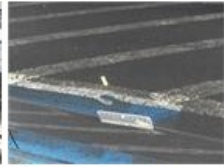
| | | | |
|----------------------------------|-----------|------------|----------------|
| Repair kit | No | Compressor | No |
| Total cost ex VAT | | | 1186,48 |
| Compressor, Missing, E - Replace | | | 75,00 |



Windscreen, Stone chip(s), E - Replace 0,00



Door F R, Dent(s), PDR - Paintless dent repair 63,00



Bumper F, Scratch(es), LI - Repair and paint (complete) 211,80



Bonnet, Scratch(es), Acceptable 0,00



Bumper R, Scratch(es), LI - Repair and paint (complete) 211,80



Tyre repair kit, Missing, E - Replace 210,53



Wing F L, Dent(s) and scratch(es), Acceptable 0,00



Door R R, Dent(s) and scratch(es), LI - Repair and paint (complete) 414,35

