



VOLKSWAGEN PASSAT VARIANT: 1KXS335

Vinnumber:	WVWZZZ3CZGE023758	Versionname:	2.0 TDI VARIANT COMFORTLINE
First Registrationdate:	27/07/2015	Fiscalpower:	
Expertise Mileage:	169516	Power Kw:	110
Bodytype:		Body color:	Light Blue
Gearbox:	MAN 6 VIT	Paint type:	Metalic
Transmission:	Front	Rims summer:	Aluminium
Fueltype:	Diesel	Oil level:	OK
Battery functioning:	Yes	Parking lot:	4511
Number of doors:	5		
Number of seats:	5		
Number head rests:	5		
Rims summer:	Aluminium		
Category:	Passenger Car		
Oil level:	OK		
Registration Certificate Car (BE):	Yes		

Options

Radio CD		Central consol F	
GPS storage		Luggage cover	
GPS storage	SD	Front parking sensors	
Windows electric F		Rear parking sensors	
Windows electric R		Type of Tow bar	Tow bar fixed
Cruise Control			
Steering wheel multifunctional			
Radio multimedia			
Type of headlighting	Headlighting Halogen		
Type of GPS	GPS big screen color		
Type of Lining	Lining fabrics		
Type of climate control	Autom climate control		

Limited Technical Inspection

Airco functioning	OK	Battery functioning	Yes
Tires wear profile	OK	Power steering	Yes
Idle position	OK	Sound engine	OK
Engine startingtime	OK	Clutch test	OK
Exhaust gass	OK	Wiper fluid level	OK
Handbrake	OK	Transmission	OK
		Lighting	OK
		Wiperblades	OK

Degree of wear

	215/60/16/99 H LightMetal			
Winter tyres:	Fr.L.	BF Goodrich: 7 mm	Fr.R.	BF Goodrich: 7 mm
	Re.L.	BF Goodrich: 7 mm	Re.R.	BF Goodrich: 7 mm

Assistance equipment

Spare wheel	Yes	Jack	Yes
Number of charging cables (normal)	0		
Number of charging cables (rapid charge)	0		

Total cost ex VAT	1958,61
-------------------	----------------

Wing R R, Dent(s) and scratch(es), Acceptable	0,00
---	-------------

Tailgate, Dent(s), Acceptable	0,00
-------------------------------	-------------

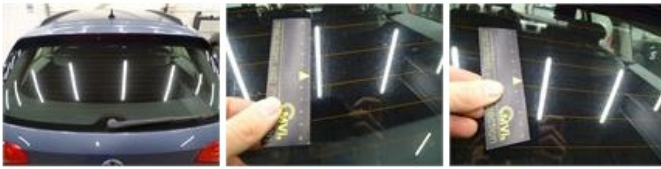
No pictures to display	
------------------------	--

No pictures to display	
------------------------	--

Door R L, Scratch(es), Acceptable 0,00

No pictures to display

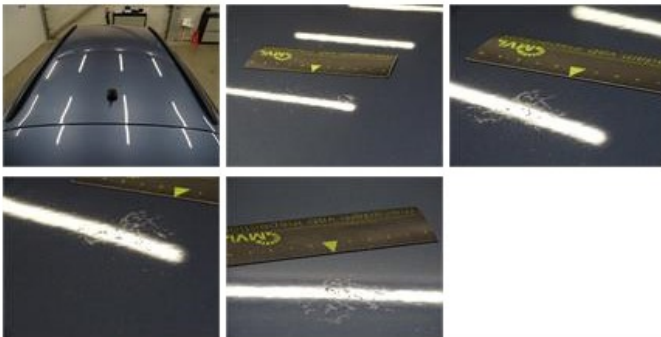
Rear window, Scratch(es), Acceptable 0,00



Bonnet, Dent(s), PDR - Paintless dent repair 122,40



Roof, Chemical polution, LI - Repair and paint (complete) 481,50



Door panel R L, Broken, E - Replace 10,00



Bumper R, Scratch(es), LI - Repair and paint (complete) 211,80



Trunk lid covering R, Scratch(es), Acceptable 0,00

No pictures to display

Door F L, Dent(s) and scratch(es), LI - Repair and paint (complete) 318,35





Wing R L, Scratch(es), Acceptable 0,00

No pictures to display

Door F R, Scratch(es), Acceptable 0,00

No pictures to display

Windscreen, Stone chip(s), E - Replace 487,20



Rearview mirror housing R, Scratch(es), LI - Repair and paint (complete) 115,56



Door R R, Scratch(es), Acceptable 0,00

No pictures to display

Bumper F, Scratch(es), LI - Repair and paint (complete) 211,80

