



**BMW 4 GRAN COUPE: FP9556**

Vinnumber:	<b>WBA4F11060G316026</b>	Versionname:	<b>2.0 420D XDRIVE (140KW) 4WD GRAN COUPE</b>
First Registrationdate:	<b>8/12/2015</b>	Fiscalpower:	
Expertise Mileage:	<b>147506</b>	Power Kw:	<b>140</b>
Bodytype:		Body color:	<b>Grey</b>
Gearbox:	<b>Automatic</b>	Paint type:	<b>Metalic</b>
Transmission:	<b>Back</b>	Rims summer:	<b>Aluminium</b>
Fueltype:	<b>Diesel</b>	Oil level:	<b>OK</b>
Battery functioning:	<b>Yes</b>	Parking lot:	<b>1208</b>
Number of doors:	<b>5</b>		
Number of seats:	<b>5</b>		
Number head rests:	<b>4</b>		
Rims summer:	<b>Aluminium</b>		
Category:	<b>Passenger Car</b>		
Oil level:	<b>OK</b>		

**Options**

Radio CD		Central consol F	
GPS storage	<b>HD</b>	Front parking sensors	
GPS storage		Rear parking sensors	
Windows electric F		Type of Tow bar	<b>Tow bar removable</b>
Windows electric R			
Cruise Control			
Steering wheel multifunctional			
Seats F heated			
Radio multimedia			
Type of headlighting	<b>Headlighting Xenon</b>		
Type of GPS	<b>GPS big screen color</b>		
Type of Lining	<b>Lining leather</b>		
Type of climate control	<b>Autom climate control</b>		
Head-up Display			

**Limited Technical Inspection**

Airco functioning	<b>OK</b>	Battery functioning	<b>Yes</b>
Tires wear profile	<b>OK</b>	Sound engine	<b>OK</b>
Idle position	<b>OK</b>	Clutch test	<b>OK</b>
Engine startingtime	<b>OK</b>	Wiper fluid level	<b>OK</b>
Exhaust gass	<b>OK</b>	Transmission	<b>OK</b>
Handbrake	<b>OK</b>	Lighting	<b>OK</b>
		Wiperblades	<b>OK</b>

**Degree of wear**

	<b>225/50/17/98 H LightMetal</b>			
Winter tyres:	Fr.L.	<b>Michelin: 5 mm</b>	Fr.R.	<b>Michelin: 5 mm</b>
	Re.L.	<b>Continental: 7 mm</b>	Re.R.	<b>Continental: 7 mm</b>

**Assistance equipment**

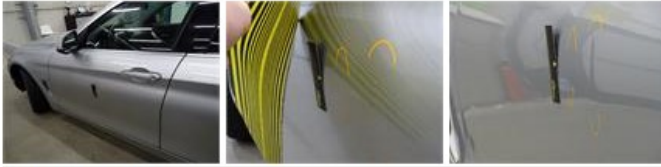
Repair kit	<b>Yes</b>	Compressor	<b>Yes</b>
Total cost ex VAT			<b>507,16</b>
Alloy rim F R, Scratch(es), LI - Repair and paint (complete)			<b>95,00</b>



Windscreen, Stone chip(s), Acceptable 0,00

No pictures to display

Door F L, Dent(s), PDR - Paintless dent repair 63,00



Bumper R, Scratch(es), Acceptable 0,00

No pictures to display

Alloy rim R R, Scratch(es), LI - Repair and paint (complete) 95,00



Bonnet, Stone chip(s), Acceptable 0,00

No pictures to display

Bumper F, Scratch(es), LI - Repair and paint (complete) 254,16

