



**MERCEDES CLA SHOOTING BRAKE: 1KVN436**

Vinnumber:	<b>WDD1179081N226747</b>	Versionname:	<b>2.1 CLA 200 CDI SHOOTING BRAKE</b>
First Registrationdate:	<b>14/07/2015</b>	Fiscalpower:	
Expertise Mileage:	<b>74465</b>	Power Kw:	<b>100</b>
Bodytype:	<b>Break</b>	Body color:	<b>Black</b>
Gearbox:	<b>Automatic</b>	Paint type:	<b>Metalic</b>
Transmission:	<b>Back</b>	Rims summer:	<b>Aluminium</b>
Fueltype:	<b>Diesel</b>	Oil level:	<b>OK</b>
Maintenance:	<b>SERVICE B5 OVER 154 DAGEN</b>	Parking lot:	<b>PARKING KT</b>
Maintenance:	<b>OK</b>		
Battery functioning:	<b>Yes</b>		
Number of doors:	<b>5</b>		
Number of seats:	<b>5</b>		
Number head rests:	<b>5</b>		
Rims summer:	<b>Aluminium</b>		
Category:	<b>Passenger Car</b>		
Oil level:	<b>OK</b>		
Registration Certificate Car (BE):	<b>Yes</b>		

**Options**

Radio CD		Central consol F	
GPS storage	<b>SD</b>	Luggage cover	
GPS storage		Type of Tow bar	<b>Tow bar fixed</b>
Windows electric F			
Windows electric R			
Cruise Control			
Steering wheel multifunctional			
Type of headlighting	<b>Headlighting Halogen</b>		
Type of GPS	<b>GPS big screen color</b>		
Type of Lining	<b>Lining semi-artificial leather</b>		
Type of climate control	<b>Manual climate control</b>		

**Limited Technical Inspection**

Airco functioning	<b>OK</b>	Battery functioning	<b>Yes</b>
Tires wear profile	<b>OK</b>	Power steering	<b>Yes</b>
Idle position	<b>OK</b>	Sound engine	<b>OK</b>
Engine startingtime	<b>OK</b>	Clutch test	<b>OK</b>
Exhaust gass	<b>OK</b>	Wiper fluid level	<b>OK</b>
Handbrake	<b>OK</b>	Transmission	<b>OK</b>
		Lighting	<b>OK</b>
		Wiperblades	<b>OK</b>

**Degree of wear**

<b>205/55/16/91 V LightMetal</b>				
Summer tyres:	Fr.L.	<b>Vredestein: 5 mm</b>	Fr.R.	<b>Vredestein: 5 mm</b>
	Re.L.	<b>Vredestein: 6 mm</b>	Re.R.	<b>Vredestein: 6 mm</b>

**Assistance equipment**

Repair kit	<b>Yes</b>	Compressor	<b>Yes</b>
------------	------------	------------	------------

Total cost ex VAT	<b>3672,74</b>
-------------------	----------------

Rearview mirror housing R, Scratch(es), LI - Repair and paint (complete)	<b>115,56</b>
--	---------------



Bumper F, Dent(s) and scratch(es), LI - Repair and paint (complete)

235,80



Door R R, Scratch(es), 67 - Polish

50,00



Alloy rim R R, Scratch(es), LI - Repair and paint (complete)

95,00



Roof pillar L, Dent(s), PDR - Paintless dent repair

63,00



Alloy rim F R, Scratch(es), LI - Repair and paint (complete)

95,00



Door F L, Scratch(es), LI - Repair and paint (complete)

318,35



Bumper trim R, Scratch(es), E - Replace 92,90



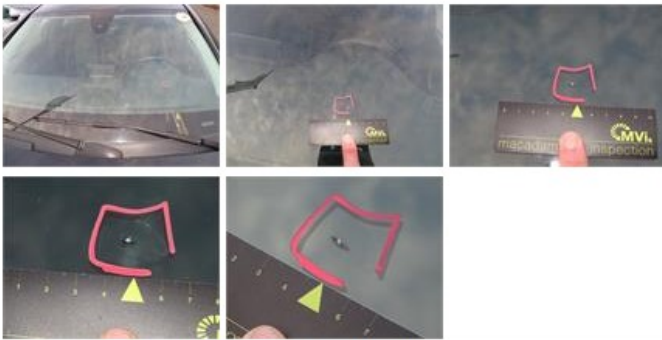
Windscreen trim, Chemical pollution, P - Check 0,00



Wing F R, Scratch(es), 67 - Polish 50,00



Windscreen, Stone chip(s), E - Replace 487,20



Door R L, Scratch(es), LI - Repair and paint (complete) 318,35



Interior, Dirty, Chemical cleaning 150,00





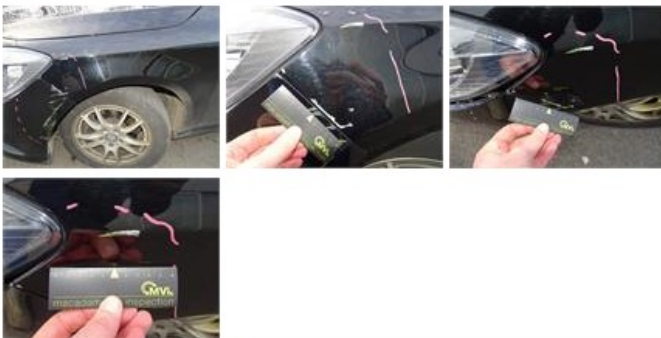
Wing R L, Dent(s) and scratch(es), LI - Repair and paint (complete)

332,20



Wing F L, Dent(s) and scratch(es), LI - Repair and paint (complete)

316,18



Boot carpet, Dirty, Chemical cleaning

100,00



Roof pillar R, Dent(s), PDR - Paintless dent repair

190,20



Alloy rim F L, Scratch(es), LI - Repair and paint (complete)

95,00



Bumper R, Dent(s) and scratch(es), LI - Repair and paint (complete)

211,80



Wing R R, Dent(s) and scratch(es), LI - Repair and paint (complete)

356,20

