



VOLVO V60: 1PAY145

| | | | |
|------------------------------------|--------------------------|--------------|-----------------------|
| Vinnumber: | YV1FW74C1H1330803 | Versionname: | 2.0 D2 KINETIC |
| First Registrationdate: | 25/05/2016 | Fiscalpower: | |
| Expertise Mileage: | 199292 | Power Kw: | 88 |
| Bodytype: | | Body color: | White |
| Gearbox: | MAN 6 VIT | Paint type: | Opaque |
| Transmission: | Front | Rims summer: | Aluminium |
| Fueltype: | Diesel | Oil level: | OK |
| Battery functioning: | Yes | Parking lot: | 2602 |
| Number of doors: | 5 | | |
| Number of seats: | 5 | | |
| Number head rests: | 5 | | |
| Rims summer: | Aluminium | | |
| Category: | Passenger Car | | |
| Oil level: | OK | | |
| Registration Certificate Car (BE): | Yes | | |

Options

| | | | |
|--------------------------------|------------------------------|----------------------|--------------------------|
| Radio CD | | Central consol F | |
| GPS storage | | Luggage cover | |
| GPS storage | HD | Rear parking sensors | |
| Windows electric F | | Type of Tow bar | Tow bar removable |
| Windows electric R | | | |
| Cruise Control | | | |
| Steering wheel multifunctional | | | |
| Radio multimedia | | | |
| Type of headlighting | Headlighting Halogen | | |
| Type of GPS | GPS big screen color | | |
| Type of Lining | Lining fabrics | | |
| Type of climate control | Autom climate control | | |

Limited Technical Inspection

| | | | |
|---------------------|-----------|---------------------|------------|
| Airco functioning | OK | Battery functioning | Yes |
| Tires wear profile | OK | Power steering | Yes |
| Idle position | OK | Sound engine | OK |
| Engine startingtime | OK | Clutch test | OK |
| Exhaust gass | OK | Wiper fluid level | OK |
| Handbrake | OK | Transmission | OK |
| | | Lighting | OK |
| | | Wiperblades | OK |

Degree of wear

| | | | | |
|---------------|----------------------------------|--------------------------|-------|--------------------------|
| Winter tyres: | 215/55/16/93 H LightMetal | | | |
| | Fr.L. | Michelin: 5 mm | Fr.R. | Michelin: 5 mm |
| | Re.L. | Continental: 5 mm | Re.R. | Continental: 5 mm |
| | | | | |

Assistance equipment

| | | | |
|--|------------|------------|------------|
| Repair kit | Yes | Compressor | Yes |
| Number of charging cables (normal) | 0 | | |
| Number of charging cables (rapid charge) | 0 | | |

| | |
|---|----------------|
| Total cost ex VAT | 1284,88 |
| Wing R L, Scratch(es), Acceptable | 0,00 |
| <i>No pictures to display</i> | |
| Bumper R, Scratch(es), LI - Repair and paint (complete) | 211,80 |



Interior, Worn, Acceptable

0,00



Alloy rim R L, Scratch(es), Acceptable

0,00

No pictures to display

Roof pillar L, Dent(s), Acceptable

0,00

No pictures to display

Wing R R, Dent(s) and scratch(es), Acceptable

0,00

No pictures to display

Bumper F, Scratch(es), LI - Repair and paint (complete)

211,80



Roof pillar R, Dent(s), Acceptable

0,00

No pictures to display

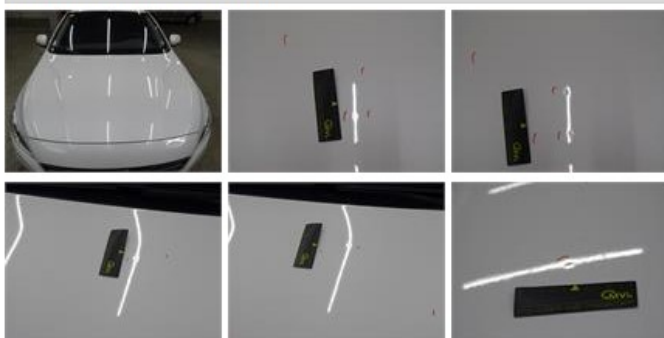
Roof, Dent(s), Acceptable

0,00

No pictures to display

Bonnet, Hail damage, PDR - Hail

450,00





Alloy rim F L, Scratch(es), LI - Repair and paint (complete)

95,00



Rear spoiler, Dent(s), Acceptable

0,00

No pictures to display

Alloy rim F R, Scratch(es), LI - Repair and paint (complete)

95,00



Wing F L, Scratch(es), Acceptable

0,00

No pictures to display

Door panel F R, Tear, Smart repair

110,64



Door panel R R, Tear, Smart repair

110,64



Door F L, Scratch(es), Acceptable

0,00

No pictures to display