



**LU Volkswagen Passat: AN4216**

Vinnnumber:	<b>WVWZZZ3CZGE133075</b>	Versionname:	<b>2.0 TDI 110KW HIGHLINE BMT DSG</b>
First Registrationdate:	<b>10/12/2015</b>	Fiscalpower:	
Expertise Mileage:	<b>145001</b>	Power Kw:	<b>110</b>
Bodytype:		Body color:	<b>Grey</b>
Gearbox:	<b>Automatic</b>	Paint type:	<b>Metalic</b>
Transmission:	<b>Front</b>	Rims summer:	<b>Aluminium</b>
Fueltype:	<b>Diesel</b>	Oil level:	<b>OK</b>
Battery functioning:	<b>Yes</b>	Parking lot:	<b>2720</b>
Number of doors:	<b>5</b>		
Number of seats:	<b>5</b>		
Number head rests:	<b>5</b>		
Rims summer:	<b>Aluminium</b>		
Category:	<b>Passenger Car</b>		
Oil level:	<b>OK</b>		

**Options**

Radio CD		Central consol F	
GPS storage		Front parking sensors	
GPS storage	<b>SD</b>	Rear parking sensors	
Windows electric F		Type of Tow bar	<b>No Tow bar</b>
Windows electric R			
Cruise Control			
Steering wheel multifunctional			
Seats F heated			
Radio multimedia			
Type of headlighting	<b>Headlighting Xenon</b>		
Type of GPS	<b>GPS big screen color</b>		
Type of Lining	<b>Lining semi-Alcantara</b>		
Type of climate control	<b>Autom climate control</b>		

**Limited Technical Inspection**

Airco functioning	<b>OK</b>	Battery functioning	<b>Yes</b>
Tires wear profile	<b>OK</b>	Power steering	<b>Yes</b>
Idle position	<b>OK</b>	Sound engine	<b>OK</b>
Engine startingtime	<b>OK</b>	Clutch test	<b>OK</b>
Exhaust gass	<b>OK</b>	Wiper fluid level	<b>OK</b>
Handbrake	<b>OK</b>	Transmission	<b>OK</b>
		Lighting	<b>OK</b>
		Wiperblades	<b>OK</b>

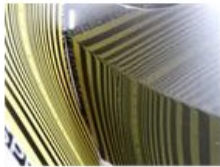
**Degree of wear**

<b>215/55/17/94 H LightMetal</b>				
Winter tyres:	Fr.L.	<b>Continental: 6 mm</b>	Fr.R.	<b>Continental: 6 mm</b>
	Re.L.	<b>Continental: 8 mm</b>	Re.R.	<b>Continental: 8 mm</b>

**Assistance equipment**

Repair kit	<b>Yes</b>	Compressor	<b>Yes</b>
Number of charging cables (normal)	<b>0</b>		
Number of charging cables (rapid charge)	<b>0</b>		

Total cost ex VAT	<b>727,75</b>
Bonnet, Dent(s), Acceptable	<b>0,00</b>
<i>No pictures to display</i>	
Bumper R, Dent(s) and scratch(es), LI - Repair and paint (complete)	<b>211,80</b>



Roof, Dent(s), Acceptable	0,00
---------------------------	------

No pictures to display

Door F L, Dent(s) and scratch(es), LI - Repair and paint (complete)	318,35
---------------------------------------------------------------------	--------



Door R L, Dent(s) and scratch(es), Acceptable	0,00
-----------------------------------------------	------

No pictures to display

Bumper F, Scratch(es), Acceptable	0,00
-----------------------------------	------

No pictures to display

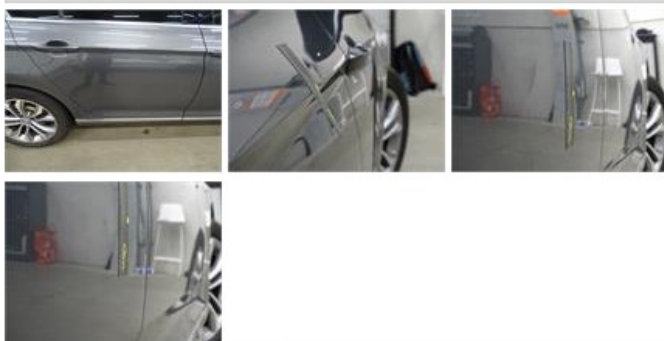
Wing R R, Dent(s) and scratch(es), Acceptable	0,00
-----------------------------------------------	------

No pictures to display

Door F R, Scratch(es), Acceptable	0,00
-----------------------------------	------

No pictures to display

Door R R, Dent(s), PDR - Paintless dent repair	102,60
------------------------------------------------	--------



Windscreen, Scratch(es), Acceptable	0,00
-------------------------------------	------



Wing F R, Bad repair, Acceptable	0,00
----------------------------------	------



Wing R L, Scratch(es), Acceptable	0,00
-----------------------------------	------

wing R L, Scratch(es), Acceptable

0,00

No pictures to display

Alloy rim R L polished, Scratch(es), LI - Repair and paint (complete)

95,00

