



<b>MINI : 1PCY217</b>			
Vinnumber:	<b>WMWXN110603B51640</b>	Versionname:	<b>1.5 ONE D</b>
First Registrationdate:	<b>7/06/2016</b>	Fiscalpower:	
Expertise Mileage:	<b>126369</b>	Power Kw:	<b>70</b>
Bodytype:		Body color:	<b>Black</b>
Gearbox:	<b>MAN 6 VIT</b>	Paint type:	<b>Metalic</b>
Transmission:	<b>Front</b>	Rims summer:	<b>Aluminium</b>
Fueltype:	<b>Diesel</b>	Oil level:	<b>OK</b>
Battery functioning:	<b>Yes</b>	Parking lot:	<b>1721</b>
Number of doors:	<b>3</b>		
Number of seats:	<b>4</b>		
Number head rests:	<b>4</b>		
Rims summer:	<b>Aluminium</b>		
Category:	<b>Passenger Car</b>		
Oil level:	<b>OK</b>		
Registration Certificate Car (BE):	<b>Yes</b>		

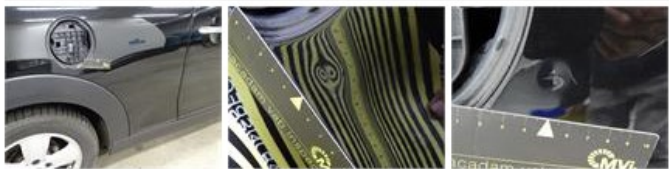
<b>Options</b>			
Windows electric F		Luggage cover	
Radio multimedia		Type of Tow bar	<b>No Tow bar</b>
Type of headlighting	<b>Headlighting Halogen</b>		
Type of GPS	<b>GPS big screen color</b>		
Type of Lining	<b>Lining fabrics</b>		
Type of climate control	<b>Manual climate control</b>		

<b>Limited Technical Inspection</b>			
Airco functioning	<b>OK</b>	Battery functioning	<b>Yes</b>
Tires wear profile	<b>OK</b>	Power steering	<b>Yes</b>
Idle position	<b>OK</b>	Sound engine	<b>OK</b>
Engine startingtime	<b>OK</b>	Clutch test	<b>OK</b>
Exhaust gass	<b>OK</b>	Wiper fluid level	<b>OK</b>
Handbrake	<b>OK</b>	Transmission	<b>OK</b>
		Lighting	<b>OK</b>
		Wiperblades	<b>OK</b>

<b>Degree of wear</b>				
	<b>175/65/15/84 T LightMetal</b>			
Winter tyres:	Fr.L.	<b>Dunlop: 5 mm</b>	Fr.R.	<b>Dunlop: 5 mm</b>
	Re.L.	<b>Dunlop: 5 mm</b>	Re.R.	<b>Dunlop: 5 mm</b>

<b>Assistance equipment</b>			
Repair kit	<b>Yes</b>	Compressor	<b>Yes</b>
Number of charging cables (normal)	<b>0</b>		
Number of charging cables (rapid charge)	<b>0</b>		

<b>Total cost ex VAT</b>	<b>994,60</b>
<b>Wing R R, Dent(s) and scratch(es), LI - Repair and paint (complete)</b>	<b>308,20</b>





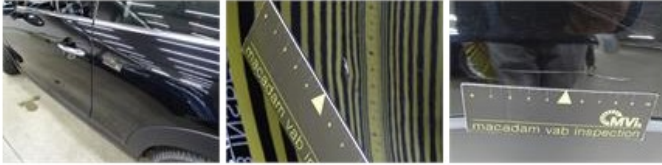
Alloy Rims (all), Not original part, Acceptable 0,00

No pictures to display

Roof, Scratch(es), Acceptable 0,00

No pictures to display

Wing R L, Dent(s) and scratch(es), LI - Repair and paint (complete) 308,20



Bonnet, Chemical pollution, LI - Repair and paint (complete) 290,08



Fuel cap cover, Broken, E - Replace 88,12

