


**BMW 3 GRAN TURISMO: 1KGK548**

Vinnumber:	<b>WBA3Y11000GD87635</b>	Versionname:	<b>2.0 318D (100KW) GRAN TURISMO</b>
First Registrationdate:	<b>28/04/2015</b>	Fiscalpower:	
Expertise Mileage:	<b>73472</b>	Power Kw:	<b>100</b>
Bodytype:		Body color:	<b>Blue</b>
Gearbox:	<b>MAN 6 VIT</b>	Paint type:	<b>Metalic</b>
Transmission:	<b>Back</b>	Rims summer:	<b>Aluminium</b>
Fueltype:	<b>Diesel</b>	Oil level:	<b>OK</b>
Maintenance:	<b>OK</b>	Parking lot:	<b>3612</b>
Battery functioning:	<b>Yes</b>		
Number of doors:	<b>5</b>		
Number of seats:	<b>5</b>		
Number head rests:	<b>5</b>		
Rims summer:	<b>Aluminium</b>		
Category:	<b>Passenger Car</b>		
Oil level:	<b>OK</b>		
Registration Certificate Car (BE):	<b>Yes</b>		

**Options**

Radio CD	Central consol F
Windows electric F	Luggage cover
Windows electric R	Rear parking sensors
Cruise Control	
Steering wheel multifunctional	
Seats F heated	
Type of headlighting	<b>Headlighting Halogen</b>
Type of GPS	<b>GPS big screen color</b>
Type of Lining	<b>Lining artificial leather</b>
Type of climate control	<b>Autom climate control</b>

**Limited Technical Inspection**

Airco functioning	<b>OK</b>	Battery functioning	<b>Yes</b>
Tires wear profile	<b>OK</b>	Power steering	<b>Yes</b>
Idle position	<b>OK</b>	Sound engine	<b>OK</b>
Engine startingtime	<b>OK</b>	Clutch test	<b>OK</b>
Exhaust gass	<b>OK</b>	Wiper fluid level	<b>OK</b>
Handbrake	<b>OK</b>	Transmission	<b>OK</b>
		Lighting	<b>OK</b>
		Wiperblades	<b>OK</b>

**Degree of wear**

	<b>225/55/17/92 MS LightMetal</b>			
Winter tyres:	Fr.L.	<b>Pirelli: 4 mm</b>	Fr.R.	<b>Pirelli: 4 mm</b>
	Re.L.	<b>Pirelli: 5 mm</b>	Re.R.	<b>Pirelli: 5 mm</b>

**Assistance equipment**

Repair kit	<b>Yes</b>	Compressor	<b>Yes</b>
Total cost ex VAT			<b>1543,38</b>
Bonnet, Chemical polution, LI - Repair and paint (complete)			<b>290,08</b>



Alloy rim F L, Scratch(es), Acceptable 0,00

No pictures to display

Rearview mirror housing R, Scratch(es), Acceptable 0,00

No pictures to display

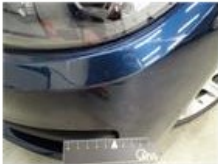
Roof, Chemical pollution, LI - Repair and paint (complete) 481,50



Alloy rim R L, Scratch(es), LI - Repair and paint (complete) 95,00



Bumper F, Scratch(es), LI - Repair and paint (complete) 211,80



Door R R, Scratch(es), Acceptable 0,00

No pictures to display

Alloy rim R R, Scratch(es), LI - Repair and paint (complete) 95,00



Tailgate, Dent(s), Acceptable 0,00

No pictures to display

Rear window, Scratch(es), E - Replace 370,00



Bumper R, Scratch(es), Acceptable 0,00

No pictures to display