



MERCEDES GLA: RC5786

Vinnumber:	WDC1569081J530213	Versionname:	GLA 200 d Business Solution
First Registrationdate:	29/05/2018	Fiscalpower:	
Expertise Mileage:	33336	Power Kw:	100
Bodytype:		Body color:	Grey
Gearbox:	MAN 6 VIT	Paint type:	Metalic
Transmission:	Front	Rims summer:	Aluminium
Fueltype:	Diesel	Oil level:	OK
Battery functioning:	Yes	Parking lot:	1705
Number of doors:	5		
Number of seats:	5		
Number head rests:	5		
Rims summer:	Aluminium		
Category:	Passenger Car		
Oil level:	OK		
Registration Certificate Car (BE):	Yes		

Options

Radio CD		Central consol F	
GPS storage	SD	Luggage cover	
GPS storage		Type of Tow bar	No Tow bar
Windows electric F			
Windows electric R			
Cruise Control			
Steering wheel multifunctional			
Radio multimedia			
Type of headlighting	Headlighting Halogen		
Type of GPS	GPS big screen color		
Type of Lining	Lining semi-artificial leather		
Type of climate control	Autom climate control		

Limited Technical Inspection

Airco functioning	OK	Battery functioning	Yes
Tires wear profile	OK	Power steering	Yes
Idle position	OK	Sound engine	OK
Engine startingtime	OK	Clutch test	OK
Exhaust gass	OK	Wiper fluid level	OK
Handbrake	OK	Transmission	OK
		Lighting	OK
		Wiperblades	OK

Degree of wear

	215/60/17/96 H LightMetal			
Winter tyres:	Fr.L.	Michelin: 6 mm	Fr.R.	Michelin: 6 mm
	Re.L.	Michelin: 7 mm	Re.R.	Michelin: 7 mm

Assistance equipment

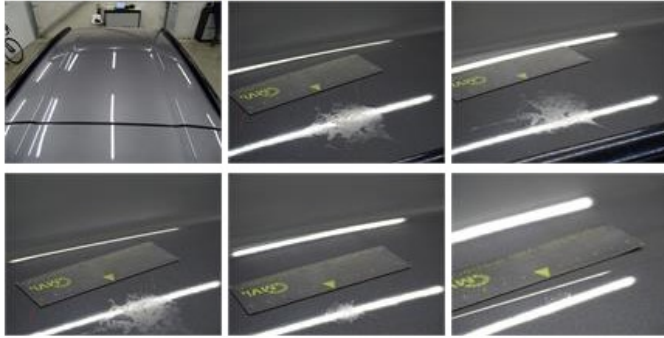
Repair kit	Yes	Compressor	Yes
Number of charging cables (normal)	0		
Number of charging cables (rapid charge)	0		

Total cost ex VAT	1341,84
Door F L, Scratch(es), LI - Repair and paint (complete)	382,02



Roof, Chemical polution, LI - Repair and paint (complete)

577,80



Alloy rim R R, Scratch(es), Acceptable

0,00

No pictures to display

Bonnet, Chemical polution, 67 - Polish

0,00

No pictures to display

Windscreen, Stone chip(s), Acceptable

0,00

No pictures to display

Wing F L, Scratch(es), Acceptable

0,00

No pictures to display

Door F R, Dent(s) and scratch(es), LI - Repair and paint (complete)

382,02



Door R R, Bad repair, Acceptable

0,00

