



**BMW 5 TOURING: 1LRA148**

Vinnumber:	<b>WBA5L11020G323262</b>	Versionname:	<b>2.0 518D (100KW) TOURING</b>
First Registrationdate:	<b>10/11/2015</b>	Fiscalpower:	
Expertise Mileage:	<b>150226</b>	Power Kw:	<b>100</b>
Bodytype:		Body color:	<b>Black</b>
Gearbox:	<b>Automatic</b>	Paint type:	<b>Metallic</b>
Transmission:	<b>Back</b>	Rims summer:	<b>Aluminium</b>
Fueltype:	<b>Diesel</b>	Oil level:	<b>OK</b>
Maintenance:	<b>OK</b>	Parking lot:	<b>3429</b>
Battery functioning:	<b>Yes</b>		
Number of doors:	<b>5</b>		
Number of seats:	<b>5</b>		
Number head rests:	<b>5</b>		
Rims summer:	<b>Aluminium</b>		
Category:	<b>Passenger Car</b>		
Oil level:	<b>OK</b>		
Registration Certificate Car (BE):	<b>Yes</b>		

**Options**

Radio CD	Central consol F
Windows electric F	Luggage cover
Windows electric R	Front parking sensors
Cruise Control	Rear parking sensors
Steering wheel multifunctional	
Seats F heated	
Type of headlighting	<b>Headlighting Xenon</b>
Type of GPS	<b>GPS big screen color</b>
Type of Lining	<b>Lining artificial leather</b>
Type of climate control	<b>Autom climate control</b>

**Limited Technical Inspection**

Airco functioning	<b>OK</b>	Battery functioning	<b>Yes</b>
Tires wear profile	<b>OK</b>	Power steering	<b>Yes</b>
Idle position	<b>OK</b>	Sound engine	<b>OK</b>
Engine startingtime	<b>OK</b>	Clutch test	<b>OK</b>
Exhaust gass	<b>OK</b>	Wiper fluid level	<b>OK</b>
Handbrake	<b>OK</b>	Transmission	<b>OK</b>
		Lighting	<b>OK</b>
		Wiperblades	<b>OK</b>

**Degree of wear**

<b>225/55/17/92 MS LightMetal</b>				
Winter tyres:	Fr.L.	<b>Bridgestone: 4 mm</b>	Fr.R.	<b>Bridgestone: 4 mm</b>
	Re.L.	<b>Bridgestone: 5 mm</b>	Re.R.	<b>Bridgestone: 5 mm</b>

**Assistance equipment**

Repair kit	<b>Yes</b>	Compressor	<b>Yes</b>
------------	------------	------------	------------

Total cost ex VAT 633,09

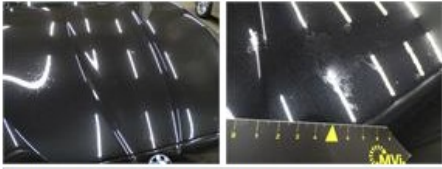
Alloy rim R R, Scratch(es), LI - Repair and paint (complete) 95,00



Rear window, Scratch(es), E - Replace 0,00



Bonnet, Chemical polution, LI - Repair and paint (complete) 348,09



Alloy rim F R, Scratch(es), LI - Repair and paint (complete) 95,00



Alloy rim F L, Scratch(es), LI - Repair and paint (complete) 95,00

