



**VOLVO V40: 1LVU940**

Vinnumber:	<b>VV1MV74L1G2321661</b>	Versionname:	<b>2.0 D2 VOLVO OCEAN RACE</b>
First Registrationdate:	<b>18/12/2015</b>	Fiscalpower:	
Expertise Mileage:	<b>97016</b>	Power Kw:	<b>88</b>
Bodytype:		Body color:	<b>Silver</b>
Gearbox:	<b>MAN 6 VIT</b>	Paint type:	<b>Metalic</b>
Transmission:	<b>Front</b>	Rims summer:	<b>Aluminium</b>
Fueltype:	<b>Diesel</b>	Oil level:	<b>OK</b>
Maintenance:	<b>NOT OK</b>	Parking lot:	<b>2231</b>
Battery functioning:	<b>Yes</b>		
Number of doors:	<b>5</b>		
Number of seats:	<b>5</b>		
Number head rests:	<b>5</b>		
Rims summer:	<b>Aluminium</b>		
Category:	<b>Passenger Car</b>		
Oil level:	<b>OK</b>		
Registration Certificate Car (BE):	<b>Yes</b>		

**Options**

Radio CD	Central consol F
Windows electric F	Luggage cover
Windows electric R	Front parking sensors
Cruise Control	Rear parking sensors
Steering wheel multifunctional	
Seats F heated	
Type of headlighting	<b>Headlighting Halogen</b>
Type of GPS	<b>GPS big screen color</b>
Type of Lining	<b>Lining artificial leather</b>
Type of climate control	<b>Manual climate control</b>
Sport seats	

**Limited Technical Inspection**

Airco functioning	<b>OK</b>	Battery functioning	<b>Yes</b>
Tires wear profile	<b>OK</b>	Power steering	<b>Yes</b>
Idle position	<b>OK</b>	Sound engine	<b>OK</b>
Engine startingtime	<b>OK</b>	Clutch test	<b>OK</b>
Exhaust gass	<b>OK</b>	Wiper fluid level	<b>OK</b>
Handbrake	<b>OK</b>	Transmission	<b>OK</b>
		Lighting	<b>OK</b>
		Wiperblades	<b>OK</b>

**Degree of wear**

Winter tyres:	<b>205/50/17/92 MS LightMetal</b>			
	Fr.L.	<b>Pirelli: 5 mm</b>	Fr.R.	<b>Pirelli: 5 mm</b>
	Re.L.	<b>Pirelli: 6 mm</b>	Re.R.	<b>Pirelli: 6 mm</b>

**Assistance equipment**

Repair kit	<b>Yes</b>	Compressor	<b>Yes</b>
------------	------------	------------	------------

Total cost ex VAT	<b>306,80</b>
-------------------	---------------

Alloy rim F R polished, Scratch(es), LI - Repair and paint (complete)	<b>95,00</b>
---	--------------



Alloy rim R R polished, Rust, Acceptable

0,00



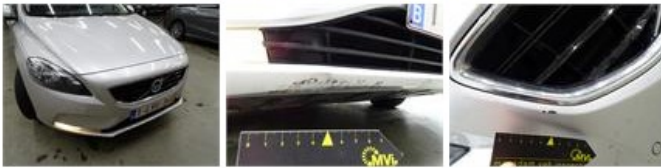
Maintenance, Maintenance, Execute

0,00



Bumper F, Scratch(es), LI - Repair and paint (complete)

211,80



Alloy rim F L polished, Rust, Acceptable

0,00



Bumper R, Scratch(es), Acceptable

0,00

No pictures to display