



BMW 2 ACTIVE TOURER: 1LRN803

Vinnumber:	WBA2B31030V691382	Versionname:	1.5 216D ACTIVE TOURER
First Registrationdate:	16/11/2015	Fiscalpower:	
Expertise Mileage:	110931	Power Kw:	85
Bodytype:		Body color:	Red
Gearbox:	MAN 6 VIT	Paint type:	Metalic
Transmission:	Front	Rims summer:	Aluminium
Fueltype:	Diesel	Oil level:	OK
Battery functioning:	Yes	Parking lot:	1528
Number of doors:	5		
Number of seats:	5		
Number head rests:	5		
Rims summer:	Aluminium		
Category:	Passenger Car		
Oil level:	OK		
Registration Certificate Car (BE):	Yes		

Options

Windows electric F	Central consol F
Windows electric R	Luggage cover
Cruise Control	Rear parking sensors
Steering wheel multifunctional	Type of Tow bar
Radio multimedia	No Tow bar
Type of headlighting	Headlighting Halogen
Type of GPS	GPS big screen color
Type of Lining	Lining fabrics
Type of climate control	Autom climate control

Limited Technical Inspection

Airco functioning	OK	Battery functioning	Yes
Tires wear profile	OK	Power steering	Yes
Idle position	OK	Sound engine	OK
Engine startingtime	OK	Clutch test	OK
Exhaust gass	OK	Wiper fluid level	OK
Handbrake	OK	Transmission	OK
		Lighting	OK
		Wiperblades	OK

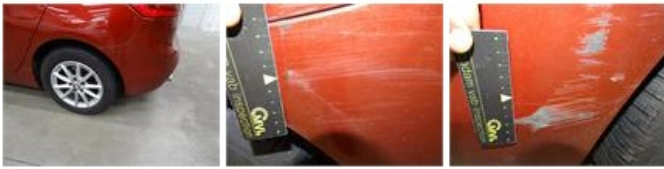
Degree of wear

Winter tyres:	205/60/16/92 H LightMetal			
	Fr.L.	Michelin: 4 mm	Fr.R.	Michelin: 4 mm
	Re.L.	Michelin: 4 mm	Re.R.	Michelin: 4 mm

Assistance equipment

Repair kit	Yes	Compressor	Yes
Number of charging cables (normal)	0		
Number of charging cables (rapid charge)	0		

Total cost ex VAT	826,80
Bumper R, Scratch(es), LI - Repair and paint (complete)	211,80



Alloy rim R R, Scratch(es), Acceptable 0,00

No pictures to display

Wing F L, Scratch(es), Acceptable 0,00

No pictures to display

Bumper F, Scratch(es), LI - Repair and paint (complete) 211,80



Alloy rim F L, Scratch(es), LI - Repair and paint (complete) 95,00



Wing R L, Scratch(es), LI - Repair and paint (complete) 308,20



Alloy rim F R, Scratch(es), Acceptable 0,00

No pictures to display