


**SKODA OCTAVIA COMBI: 1KXV651**

Vinnumber:	<b>TMBJG7NE0G0013368</b>	Versionname:	<b>1.6 CRTDI 81KW GREENLINE AMBITION</b>
First Registrationdate:	<b>28/07/2015</b>	Fiscalpower:	
Expertise Mileage:	<b>137578</b>	Power Kw:	<b>81</b>
Bodytype:		Body color:	<b>Black</b>
Gearbox:	<b>MAN 6 VIT</b>	Paint type:	<b>Metalic</b>
Transmission:	<b>Front</b>	Rims summer:	<b>Aluminium</b>
Fueltype:	<b>Diesel</b>	Oil level:	<b>OK</b>
Battery functioning:	<b>Yes</b>	Parking lot:	<b>1720</b>
Number of doors:	<b>5</b>		
Number of seats:	<b>5</b>		
Number head rests:	<b>5</b>		
Rims summer:	<b>Aluminium</b>		
Category:	<b>Passenger Car</b>		
Oil level:	<b>OK</b>		
Registration Certificate Car (BE):	<b>Yes</b>		

**Options**

Windows electric F	Central consol F
Windows electric R	Luggage cover
Cruise Control	Front parking sensors
Steering wheel multifunctional	Rear parking sensors
Radio multimedia	Type of Tow bar
Type of headlighting	<b>Headlighting Halogen</b>
Type of GPS	<b>GPS big screen color</b>
Type of Lining	<b>Lining fabrics</b>
Type of climate control	<b>Autom climate control</b>
	<b>No Tow bar</b>

**Limited Technical Inspection**

Airco functioning	<b>OK</b>	Battery functioning	<b>Yes</b>
Tires wear profile	<b>OK</b>	Power steering	<b>Yes</b>
Idle position	<b>OK</b>	Sound engine	<b>OK</b>
Engine startingtime	<b>OK</b>	Clutch test	<b>OK</b>
Exhaust gass	<b>OK</b>	Wiper fluid level	<b>OK</b>
Handbrake	<b>OK</b>	Transmission	<b>OK</b>
		Lighting	<b>OK</b>
		Wiperblades	<b>OK</b>

**Degree of wear**

	<b>205/55/16/91 H LightMetal</b>			
Winter tyres:	Fr.L.	<b>Michelin: 4 mm</b>	Fr.R.	<b>Michelin: 4 mm</b>
	Re.L.	<b>Michelin: 4 mm</b>	Re.R.	<b>Michelin: 4 mm</b>

**Assistance equipment**

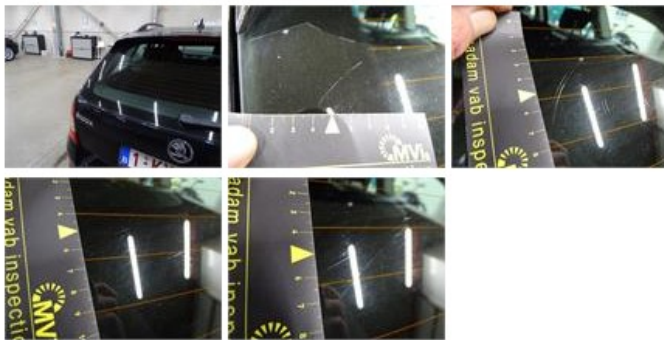
Repair kit	<b>Yes</b>	Compressor	<b>Yes</b>
Number of charging cables (normal)	<b>0</b>		
Number of charging cables (rapid charge)	<b>0</b>		

Total cost ex VAT	2249,46
Door R R, Dent(s), Acceptable	0,00
<i>No pictures to display</i>	
Door R L, Scratch(es), LI - Repair and paint (complete)	318,35



Rear window, Scratch(es), E - Replace

370,00



Wing R L, Scratch(es), LI - Repair and paint (complete)

308,20



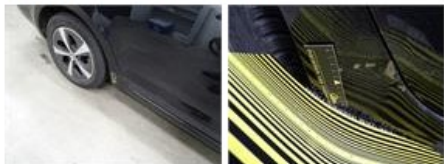
Door R R, Scratch(es), LI - Repair and paint (complete)

318,35



Wing R R, Dent(s), It - Spot repair

115,56



Bumper F, Scratch(es), Acceptable

0,00

*No pictures to display*

Alloy rim F R polished, Scratch(es), Acceptable

0,00

*No pictures to display*

Alloy rim R L polished, Scratch(es), Acceptable

0,00

*No pictures to display*

Bumper R, Crack, Le - Replace and paint

651,00



Rearlight R , Crack, E - Replace

114,00



Reflector, Scratch(es), E - Replace

54,00

