



**VOLVO V40: 1HXG308**

Vinnumber:	<b>YV1MV8481F2204352</b>	Versionname:	<b>V40 D2 Base 115PK</b>
First Registrationdate:	<b>21/10/2014</b>	Fiscalpower:	
Expertise Mileage:	<b>105221</b>	Power Kw:	<b>84</b>
Bodytype:		Body color:	<b>Black</b>
Gearbox:	<b>MAN 6 VIT</b>	Paint type:	<b>Metalic</b>
Transmission:	<b>Front</b>	Rims summer:	<b>Aluminium</b>
Fueltype:	<b>Diesel</b>	Oil level:	<b>OK</b>
Battery functioning:	<b>Yes</b>	Parking lot:	<b>1426</b>
Number of doors:	<b>5</b>		
Number of seats:	<b>5</b>		
Number head rests:	<b>5</b>		
Rims summer:	<b>Aluminium</b>		
Category:	<b>Passenger Car</b>		
Oil level:	<b>OK</b>		
Registration Certificate Car (BE):	<b>Yes</b>		

**Options**

Radio CD	Central consol F	
Windows electric F	Luggage cover	
Windows electric R	Rear parking sensors	
Cruise Control	Type of Tow bar	<b>Tow bar removable</b>
Steering wheel multifunctional		
Radio multimedia		
Type of headlighting	<b>Headlighting Halogen</b>	
Type of GPS	<b>GPS big screen color</b>	
Type of Lining	<b>Lining fabrics</b>	
Type of climate control	<b>Autom climate control</b>	

**Limited Technical Inspection**

Airco functioning	<b>OK</b>	Battery functioning	<b>Yes</b>
Tires wear profile	<b>OK</b>	Power steering	<b>Yes</b>
Idle position	<b>OK</b>	Sound engine	<b>OK</b>
Engine startingtime	<b>OK</b>	Clutch test	<b>OK</b>
Exhaust gass	<b>OK</b>	Wiper fluid level	<b>OK</b>
Handbrake	<b>OK</b>	Transmission	<b>OK</b>
		Lighting	<b>OK</b>
		Wiperblades	<b>OK</b>

**Degree of wear**

	<b>205/55/16/91 H LightMetal</b>			
Summer tyres:	Fr.L.	<b>Michelin: 3 mm</b>	Fr.R.	<b>Michelin: 3 mm</b>
	Re.L.	<b>Michelin: 3 mm</b>	Re.R.	<b>Michelin: 3 mm</b>

**Assistance equipment**

Repair kit	<b>Yes</b>	Compressor	<b>Yes</b>
Number of charging cables (normal)	<b>0</b>		
Number of charging cables (rapid charge)	<b>0</b>		

Total cost ex VAT	1316,73
Alloy rim F R, Scratch(es), Acceptable	0,00
<i>No pictures to display</i>	
Interior, Dirty, Cleaning	100,00



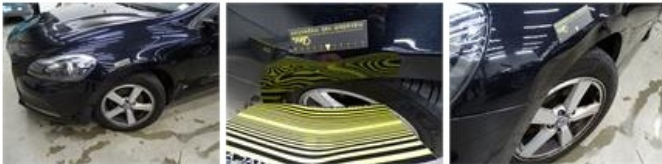
Rear window, Scratch(es), E - Replace 370,00



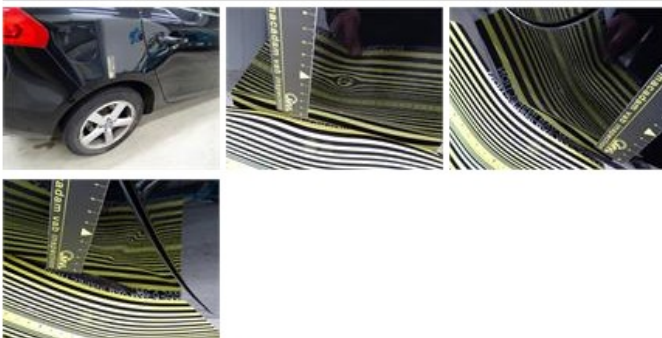
Bumper R, Scratch(es), Acceptable 0,00

No pictures to display

Wing F L, Dent(s) and scratch(es), LI - Repair and paint (complete) 220,18



Wing R R, Dent(s), LI - Repair and paint (complete) 308,20



Door F R, Scratch(es), LI - Repair and paint (complete) 318,35



Wing R L, Scratch(es), Acceptable 0,00

No pictures to display