



BMW 2 ACTIVE TOURER: 1LXP810

Vinnumber:	WBA2B11020V685559	Versionname:	1.5 214D ACTIVE TOURER
First Registrationdate:	28/12/2015	Fiscalpower:	
Expertise Mileage:	85998	Power Kw:	70
Bodytype:		Body color:	Grey
Gearbox:	MAN 6 VIT	Paint type:	Metalic
Transmission:	Front	Rims summer:	Aluminium
Fueltype:	Diesel	Oil level:	OK
Maintenance:	AUGUSTUS 2020	Parking lot:	1222
Maintenance:	19000		
Maintenance:	OK		
Battery functioning:	Yes		
Number of doors:	5		
Number of seats:	5		
Number head rests:	5		
Rims summer:	Aluminium		
Category:	Passenger Car		
Oil level:	OK		
Registration Certificate Car (BE):	Yes		

Options

GPS storage	HD	Central consol F	
GPS storage		Luggage cover	
Windows electric F		Rear parking sensors	
Windows electric R		Type of Tow bar	Tow bar removable
Steering wheel multifunctional			
Type of headlighting	Headlighting Halogen		
Type of GPS	GPS big screen color		
Type of Lining	Lining fabrics		
Type of climate control	Autom climate control		

Limited Technical Inspection

Airco functioning	OK	Battery functioning	Yes
Tires wear profile	OK	Power steering	Yes
Idle position	OK	Sound engine	OK
Engine startingtime	OK	Clutch test	OK
Exhaust gass	OK	Wiper fluid level	OK
Handbrake	OK	Transmission	OK
		Lighting	OK
		Wiperblades	OK

Degree of wear

	205/60/16/92 V LightMetal			
Summer tyres:	Fr.L.	Michelin: 5 mm	Fr.R.	Michelin: 5 mm
	Re.L.	Hankook: 4 mm	Re.R.	Hankook: 4 mm

Assistance equipment

Repair kit	Yes	Compressor	Yes
------------	------------	------------	------------

Total cost ex VAT	366,35
-------------------	---------------

Maintenance book, Missing, Acceptable	0,00
---------------------------------------	-------------

No pictures to display

Wing R L, Dent(s) and scratch(es), Acceptable	0,00
---	-------------

No pictures to display

Door R L, Dent(s) and scratch(es), Acceptable	0,00
---	-------------

No pictures to display

No pictures to display

Wing R R, Dent(s) and scratch(es), Acceptable	0,00
---	------

No pictures to display

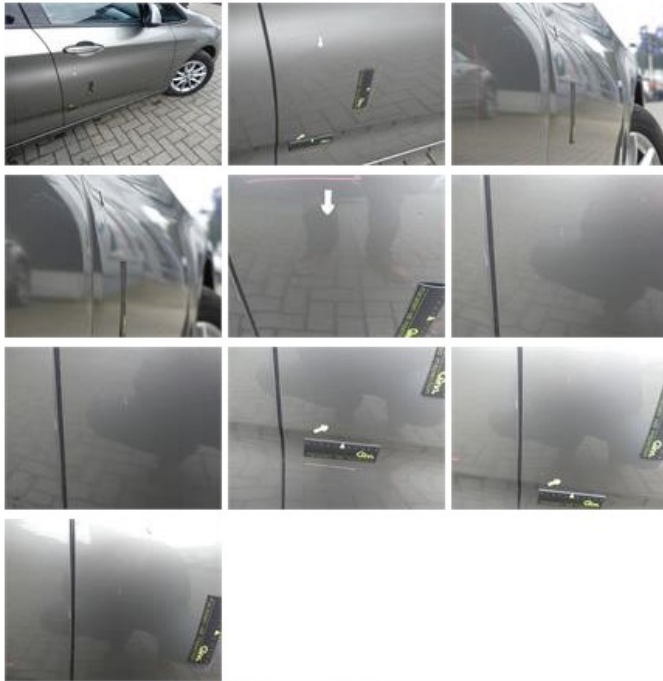
Alloy rim F L, Scratch(es), Acceptable	0,00
--	------

No pictures to display

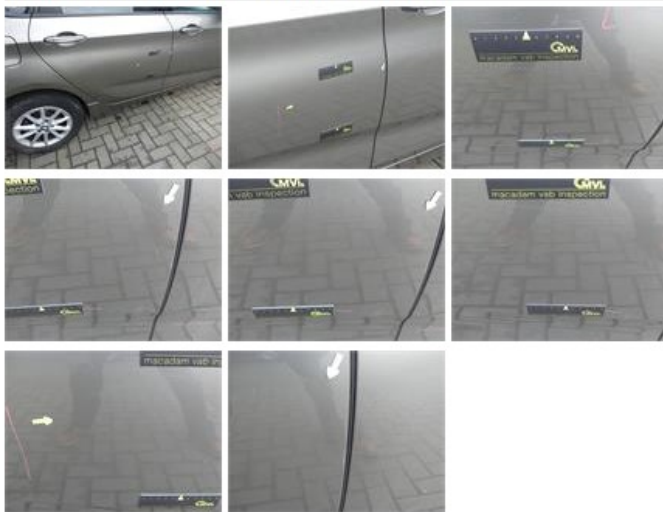
Bumper F, Scratch(es), Acceptable	0,00
-----------------------------------	------

No pictures to display

Door F R, Dent(s) and scratch(es), LI - Repair and paint (complete)	366,35
---	--------



Door R R, Scratch(es), LI - Repair and paint (complete)	0,00
---	------



Trunk lid covering R, Scratch(es), Acceptable	0,00
---	------

No pictures to display

Alloy rim F R, Scratch(es), Acceptable	0,00
--	------

No pictures to display

Door F L, Dent(s) and scratch(es), Acceptable	0,00
---	------

No pictures to display

Bumper R, Repaired, Acceptable	0,00
--------------------------------	------

No pictures to display

Outer backrest protection L, Scratch(es), Acceptable	0,00
--	------

No pictures to display

Bumper R, Scratch(es), Acceptable	0,00
-----------------------------------	------

No pictures to display