



## TOYOTA Yaris: 1GXM059

Vinnumber:	<b>VNKKD3D380A106099</b>	Versionname:	<b>YARIS Hybrid Dynamic E-CVT 74PK Aut.</b>
First Registrationdate:	<b>27/05/2014</b>	Fiscalpower:	
Expertise Mileage:	<b>67194</b>	Power Kw:	<b>55</b>
Bodytype:	<b>Hatchback</b>	Body color:	<b>Black</b>
Gearbox:	<b>Automatic</b>	Paint type:	<b>Metalic</b>
Transmission:	<b>Front</b>	Rims summer:	<b>Aluminium</b>
Fueltype:	<b>Hybrid Petrol</b>	Oil level:	<b>OK</b>
Battery functioning:	<b>Yes</b>	Parking lot:	<b>3533</b>
Number of doors:	<b>5</b>		
Number of seats:	<b>5</b>		
Number head rests:	<b>5</b>		
Rims summer:	<b>Aluminium</b>		
Category:	<b>Passenger Car</b>		
Oil level:	<b>OK</b>		
Registration Certificate Car (BE):	<b>Yes</b>		

## Options

Radio CD		Luggage cover
GPS storage		
GPS storage	<b>HD</b>	
Windows electric F		
Cruise Control		
Steering wheel multifunctional		
Radio multimedia		
Type of headlighting	<b>Headlighting Halogen</b>	
Type of GPS	<b>GPS big screen color</b>	
Type of Lining	<b>Lining fabrics</b>	
Type of climate control	<b>Autom climate control</b>	

## Limited Technical Inspection

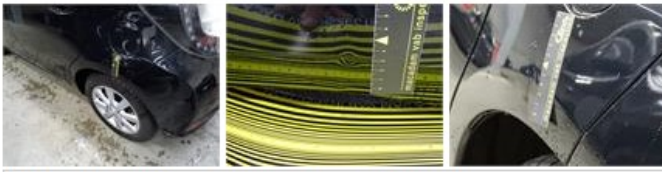
Airco functioning	<b>OK</b>	Battery functioning	<b>Yes</b>
Tires wear profile	<b>OK</b>	Power steering	<b>Yes</b>
Idle position	<b>OK</b>	Sound engine	<b>OK</b>
Engine startingtime	<b>OK</b>	Clutch test	<b>OK</b>
Exhaust gass	<b>OK</b>	Wiper fluid level	<b>OK</b>
Handbrake	<b>OK</b>	Transmission	<b>OK</b>
		Lighting	<b>OK</b>
		Wiperblades	<b>OK</b>

## Degree of wear

	<b>175/65/15/84 MS LightMetal</b>			
Summer tyres:	Fr.L.	<b>Pirelli: 6 mm</b>	Fr.R.	<b>Pirelli: 6 mm</b>
	Re.L.	<b>Pirelli: 6 mm</b>	Re.R.	<b>Pirelli: 6 mm</b>

## Assistance equipment

Emergency spare wheel	<b>Yes</b>	Jack	<b>Yes</b>
Total cost ex VAT			<b>464,00</b>
Wing R L, Dent(s), LI - Repair and paint (complete)			<b>294,56</b>



Bumper R, Scratch(es), LI - Repair and paint (complete)

169,44

