



VOLKSWAGEN GOLF VII: 1LPD592

Vinnumber:	WVWZZZAUZGP002617	Versionname:	1.6 TDI 81KW TRENDLINE
First Registrationdate:	3/11/2015	Fiscalpower:	
Expertise Mileage:	51713	Power Kw:	81
Bodytype:		Body color:	Black
Gearbox:	MAN 5 VIT	Paint type:	Metalic
Transmission:	Front	Rims summer:	Steel
Fueltype:	Diesel	Oil level:	OK
Maintenance:	OK	Parking lot:	1410
Battery functioning:	Yes		
Number of doors:	5		
Number of seats:	5		
Number head rests:	5		
Rims summer:	Steel		
Category:	Passenger Car		
Oil level:	OK		
Registration Certificate Car (BE):	Yes		

Options

Radio CD		Central consol F
GPS storage	SD	Luggage cover
GPS storage		Front parking sensors
Windows electric F		Rear parking sensors
Windows electric R		
Cruise Control		
Steering wheel multifunctional		
Type of headlighting	Headlighting Halogen	
Type of GPS	GPS big screen color	
Type of Lining	Lining fabrics	
Type of climate control	Autom climate control	

Limited Technical Inspection

Airco functioning	OK	Battery functioning	Yes
Tires wear profile	OK	Power steering	Yes
Idle position	OK	Sound engine	OK
Engine startingtime	OK	Clutch test	OK
Exhaust gass	OK	Wiper fluid level	OK
Handbrake	OK	Transmission	OK
		Lighting	OK
		Wiperblades	OK

Degree of wear

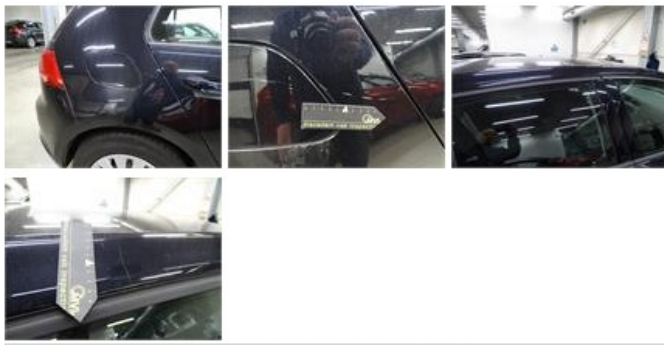
195/65/15/92 H Steel				
Summer tyres:	Fr.L.	Continental: 4 mm	Fr.R.	Continental: 4 mm
	Re.L.	Continental: 5 mm	Re.R.	Continental: 5 mm

Assistance equipment

Repair kit	Yes	Compressor	Yes
------------	------------	------------	------------

Total cost ex VAT	2537,56
-------------------	---------

Wing R R, Scratch(es), LI - Repair and paint (complete)	308,20
---	--------



Sill outer R, Scratch(es), LI - Repair and paint (complete)

310,50



Wing F L, Dent(s), LI - Repair and paint (complete)

220,18



Rearview mirror housing R, Scratch(es), Acceptable

0,00

No pictures to display

Door F R, Dent(s), LI - Repair and paint (complete)

318,35



Rear window, Scratch(es), E - Replace

0,00



Rearlight R tailgate, Waterinfiltration, Acceptable

0,00

No pictures to display

Internal Boot Lining R, Broken, E - Replace

47,00



Door F L, Dent(s), PDR - Paintless dent repair

63,00



Door R R, Scratch(es), LI - Repair and paint (complete)

318,35



Wing R L, Dent(s) and scratch(es), LI - Repair and paint (complete)

308,20



Bumper F, Scratch(es), LI - Repair and paint (complete)

211,80



Bumper R, Dent(s) and scratch(es), LI - Repair and paint (complete)

211,80



Wing F R, Scratch(es), LI - Repair and paint (complete)

220,18

