



VOLKSWAGEN GOLF VII: 1KXV357

Vinnumber:	WVWZZZAUZFW233541	Versionname:	1.6 TDI 66KW BMT TRENDLINE
First Registrationdate:	28/07/2015	Fiscalpower:	
Expertise Mileage:	42620	Power Kw:	66
Bodytype:		Body color:	Grey
Gearbox:	MAN 5 VIT	Paint type:	Metalic
Transmission:	Front	Rims summer:	Steel
Fueltype:	Diesel	Oil level:	OK
Maintenance:	OK	Parking lot:	3805
Battery functioning:	Yes		
Number of doors:	5		
Number of seats:	5		
Number head rests:	5		
Rims summer:	Steel		
Category:	Passenger Car		
Oil level:	OK		
Registration Certificate Car (BE):	Yes		

Options

Radio CD	Central consol F
Windows electric F	Luggage cover
Windows electric R	Front parking sensors
Cruise Control	Rear parking sensors
Steering wheel multifunctional	
Type of headlighting	Headlighting Halogen
Type of GPS	GPS big screen color
Type of Lining	Lining fabrics
Type of climate control	Autom climate control

Limited Technical Inspection

Airco functioning	OK	Battery functioning	Yes
Tires wear profile	OK	Power steering	Yes
Idle position	OK	Sound engine	OK
Engine startingtime	OK	Clutch test	OK
Exhaust gass	OK	Wiper fluid level	OK
Handbrake	OK	Transmission	OK
		Lighting	OK
		Wiperblades	OK

Degree of wear

	195/65/15/92 H Steel			
Summer tyres:	Fr.L.	Continental: 5 mm	Fr.R.	Continental: 5 mm
	Re.L.	Continental: 6 mm	Re.R.	Continental: 6 mm

Assistance equipment

Emergency spare wheel	Yes	Jack	Yes
-----------------------	------------	------	------------

Total cost ex VAT	1200,66
Bumper F, Scratch(es), LI - Repair and paint (complete)	211,80





Door R L, Bad repair, LI - Repair and paint (complete)

0,00



Bumper R, Dent(s) and scratch(es), LI - Repair and paint (complete)

211,80



Wing R L, Bad repair, LI - Repair and paint (complete)

0,00



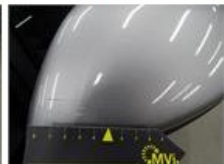
Ceiling, Stain, Cleaning

0,00

No pictures to display

Rearview mirror housing L, Scratch(es), LI - Repair and paint (complete)

115,56



Rearview mirror housing R, Scratch(es), Acceptable

0,00

No pictures to display

Door F L, Bad repair, LI - Repair and paint (complete)

0,00



Wing F L, Bad repair, LI - Repair and paint (complete)

0,00



Roof, Chemical pollution, LI - Repair and paint (complete)

481,50



Wheel cover F R, Scratch(es), E - Replace

30,00



Ignition key, Missing, E - Replace

150,00

No pictures to display