



**VOLKSWAGEN Golf: 1JAP442**

Vinnumber:	<b>WVWZZZAUZFP543909</b>	Versionname:	<b>GOLF VAR Trendline 105PK</b>
First Registrationdate:	<b>18/11/2014</b>	Fiscalpower:	
Expertise Mileage:	<b>170245</b>	Power Kw:	<b>77</b>
Bodytype:		Body color:	<b>Grey</b>
Gearbox:	<b>MAN 5 VIT</b>	Paint type:	<b>Metalic</b>
Transmission:	<b>Front</b>	Rims summer:	<b>Steel</b>
Fueltype:	<b>Diesel</b>	Oil level:	<b>OK</b>
Battery functioning:	<b>Yes</b>	Parking lot:	<b>2710</b>
Number of doors:	<b>5</b>		
Number of seats:	<b>5</b>		
Number head rests:	<b>5</b>		
Rims summer:	<b>Steel</b>		
Category:	<b>Passenger Car</b>		
Oil level:	<b>OK</b>		
Registration Certificate Car (BE):	<b>Yes</b>		

**Options**

Radio CD		Central consol F	
GPS storage		Luggage cover	
GPS storage	<b>SD</b>	Front parking sensors	
Windows electric F		Rear parking sensors	
Windows electric R		Type of Tow bar	<b>Tow bar removable</b>
Cruise Control			
Steering wheel multifunctional			
Radio multimedia			
Type of headlighting	<b>Headlighting Halogen</b>		
Type of GPS	<b>GPS big screen color</b>		
Type of Lining	<b>Lining fabrics</b>		
Type of climate control	<b>Autom climate control</b>		

**Limited Technical Inspection**

Airco functioning	<b>OK</b>	Battery functioning	<b>Yes</b>
Tires wear profile	<b>OK</b>	Power steering	<b>Yes</b>
Idle position	<b>OK</b>	Sound engine	<b>OK</b>
Engine startingtime	<b>OK</b>	Clutch test	<b>NOT OK</b>
Exhaust gass	<b>OK</b>	Wiper fluid level	<b>OK</b>
Handbrake	<b>OK</b>	Transmission	<b>OK</b>
		Lighting	<b>OK</b>
		Wiperblades	<b>OK</b>

**Degree of wear**

	<b>195/65/15/91 H Steel</b>			
Winter tyres:	Fr.L.	<b>Dunlop: 3 mm</b>	Fr.R.	<b>Dunlop: 3 mm</b>
	Re.L.	<b>Michelin: 4 mm</b>	Re.R.	<b>Michelin: 4 mm</b>

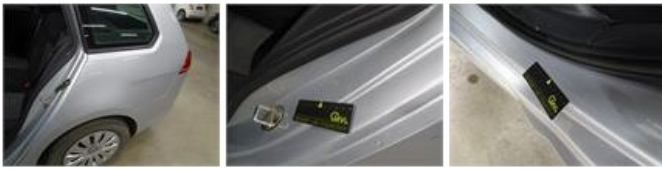
**Assistance equipment**

Spare wheel	<b>Yes</b>	Jack	<b>Yes</b>
Number of charging cables (normal)	<b>0</b>		
Number of charging cables (rapid charge)	<b>0</b>		

<b>Total cost ex VAT</b>	<b>3117,99</b>
<b>Wing R R, Dent(s), LI - Repair and paint (complete)</b>	<b>308,20</b>



Rocker panel inner R L, Dent(s), LI - Repair and paint (complete) 115,56



Tailgate, Dent(s), LI - Repair and paint (complete) 301,68



Bumper F, Scratch(es), Acceptable 0,00

No pictures to display  
Ceiling, Hole, E - Replace 494,00



Wheel cover F R, Scratch(es), Acceptable 0,00

No pictures to display  
Rearlight R , Scratch(es), E - Replace 114,00



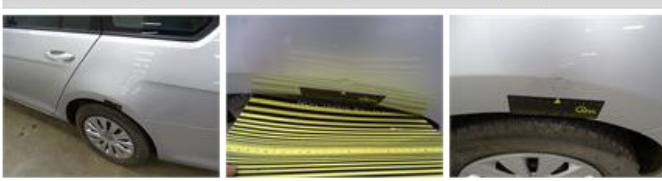
Trunk lid covering R, Scratch(es), Smart repair 110,64



Rearview mirror housing L, Scratch(es), Acceptable 0,00

No pictures to display  
Roof pillar L, Dent(s) and scratch(es), Acceptable 0,00

No pictures to display  
Wing R L, Dent(s) and scratch(es), LI - Repair and paint (complete) 308,20





Backrest cover F L, Worn, E - Replace

360,00



Seat cover F L, Worn, E - Replace

360,00



Door R R, Scratch(es), LI - Repair and paint (complete)

318,35



Bumper R, Scratch(es), LI - Repair and paint (complete)

211,80



Rocker panel inner R R, Dent(s), LI - Repair and paint (complete)

115,56

