



**MINI : 1PCY514**

Vinnumber:	<b>WMWXN110103851769</b>	Versionname:	<b>1.5 ONE D</b>
First Registrationdate:	<b>7/06/2016</b>	Fiscalpower:	
Expertise Mileage:	<b>84598</b>	Power Kw:	<b>70</b>
Bodytype:		Body color:	<b>Black</b>
Gearbox:	<b>MAN 6 VIT</b>	Paint type:	<b>Metallic</b>
Transmission:	<b>Front</b>	Rims summer:	<b>Aluminium</b>
Fueltype:	<b>Diesel</b>	Oil level:	<b>OK</b>
Battery functioning:	<b>Yes</b>	Parking lot:	<b>2501</b>
Number of doors:	<b>3</b>		
Number of seats:	<b>4</b>		
Number head rests:	<b>4</b>		
Rims summer:	<b>Aluminium</b>		
Category:	<b>Passenger Car</b>		
Oil level:	<b>OK</b>		
Registration Certificate Car (BE):	<b>Yes</b>		

**Options**

Windows electric F		Luggage cover	
Radio multimedia		Type of Tow bar	<b>No Tow bar</b>
Type of headlighting	<b>Headlighting Halogen</b>		
Type of GPS	<b>GPS big screen color</b>		
Type of Lining	<b>Lining fabrics</b>		
Type of climate control	<b>Manual climate control</b>		

**Limited Technical Inspection**

Airco functioning	<b>OK</b>	Battery functioning	<b>Yes</b>
Tires wear profile	<b>OK</b>	Power steering	<b>Yes</b>
Idle position	<b>OK</b>	Sound engine	<b>OK</b>
Engine startingtime	<b>OK</b>	Clutch test	<b>OK</b>
Exhaust gass	<b>OK</b>	Wiper fluid level	<b>OK</b>
Handbrake	<b>OK</b>	Transmission	<b>OK</b>
		Lighting	<b>OK</b>
		Wiperblades	<b>OK</b>

**Degree of wear**

	<b>175/65/15/84 H LightMetal</b>			
Winter tyres:	Fr.L.	<b>Michelin: 5 mm</b>	Fr.R.	<b>Michelin: 5 mm</b>
	Re.L.	<b>Michelin: 5 mm</b>	Re.R.	<b>Michelin: 5 mm</b>

**Assistance equipment**

Repair kit	<b>Yes</b>	Compressor	<b>Yes</b>
Number of charging cables (normal)	<b>0</b>		
Number of charging cables (rapid charge)	<b>0</b>		

Total cost ex VAT 2668,93

Alloy rim F R, Scratch(es), LI - Repair and paint (complete) 95,00



Bumper spoiler F, Crack, E - Replace 42,00



Bonnet, Chemical polution, LI - Repair and paint (complete)

290,08



Bumper F, Scratch(es), LI - Repair and paint (complete)

211,80



Door F L, Dent(s) and scratch(es), LI - Repair and paint (complete)

462,35



Wheel arch cover R R, Scratch(es), E - Replace

81,00



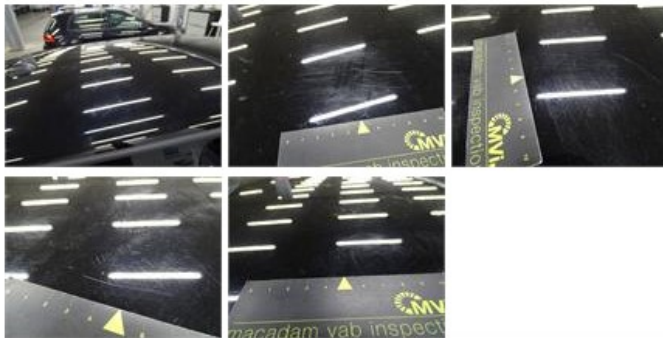
Wheel arch cover R L, Scratch(es), E - Replace

81,00



Roof, Scratch(es), LI - Repair and paint (complete)

481,50



Alloy Rims (all), Not original part, Acceptable

0,00

*No pictures to display*

Wing R R, Dent(s), LI - Repair and paint (complete)

308,20



Wing R L, Dent(s) and scratch(es), LI - Repair and paint (complete)

404,20



Bumper R, Scratch(es), LI - Repair and paint (complete)

211,80

