


MERCEDES CLA SHOOTING BRAKE: 1KLD592

Vinnumber:	WDD1179081N220399	Versionname:	2.1 CLA 200 CDI URBAN SHOOTING BRAKE
First Registrationdate:	26/05/2015	Fiscalpower:	
Expertise Mileage:	204937	Power Kw:	100
Bodytype:		Body color:	Grey
Gearbox:	MAN 6 VIT	Paint type:	Metalic
Transmission:	Front	Rims summer:	Aluminium
Fueltype:	Diesel	Oil level:	OK
Maintenance:	OVER 310 DAGEN	Parking lot:	2614
Maintenance:	OK		
Battery functioning:	Yes		
Number of doors:	5		
Number of seats:	5		
Number head rests:	1		
Rims summer:	Aluminium		
Category:	Passenger Car		
Oil level:	OK		
Registration Certificate Car (BE):	Yes		

Options

Radio CD		Central consol F	
GPS storage	SD	Luggage cover	
GPS storage		Front parking sensors	
Windows electric F		Rear parking sensors	
Windows electric R		Type of Tow bar	No Tow bar
Cruise Control			
Steering wheel multifunctional			
Radio multimedia			
Type of headlighting	Headlighting Xenon		
Type of GPS	GPS big screen color		
Type of Lining	Lining semi-leather		
Type of climate control	Manual climate control		

Limited Technical Inspection

Airco functioning	OK	Battery functioning	Yes
Tires wear profile	OK	Power steering	Yes
Idle position	OK	Sound engine	OK
Engine startingtime	OK	Clutch test	OK
Exhaust gass	OK	Wiper fluid level	OK
Handbrake	OK	Transmission	OK
		Lighting	OK
		Wiperblades	OK

Degree of wear

	225/45/17/91 H LightMetal			
Winter tyres:	Fr.L.	Kleber: 4 mm	Fr.R.	Kleber: 4 mm
	Re.L.	Kleber: 6 mm	Re.R.	Kleber: 6 mm

Assistance equipment

Repair kit	Yes	Compressor	Yes
Number of charging cables (normal)	0		
Number of charging cables (rapid charge)	0		

Total cost ex VAT	1238,26
Wing F L, Scratch(es), Acceptable	0,00



Wing R R, Dent(s), Acceptable 0,00



Bumper R, Scratch(es), Acceptable 0,00



Bonnet, Hail damage, PDR - Paintless dent repair 201,60



Roof pillar L, Hail damage, PDR - Paintless dent repair 142,20



Door F R, Dent(s), Acceptable 0,00

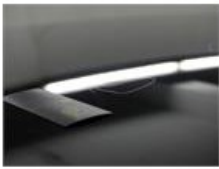


Door F L, Bad repair, LI - Repair and paint (complete) 318,35



Roof, Hail damage, PDR - Paintless dent repair 142,20





Wing R L, Repaired, No repair

0,00



Door R R, Repaired, P - Check

0,00



Bumper F, Scratch(es), It - Spot repair

115,56



Door R L, Bad repair, LI - Repair and paint (complete)

318,35

