



PEUGEOT Boxer 335: 1CNA657

Vinnumber:	VF3YCTMFB12138524	Versionname:	BOXER 335 B/F MWB HR L2H2 FAP 130PK
First Registrationdate:	9/01/2012	Fiscalpower:	
Expertise Mileage:	118194	Power Kw:	96
Bodytype:		Body color:	Black
Gearbox:	MAN 6 VIT	Paint type:	Opaque
Transmission:	Front	Rims summer:	Steel
Fueltype:	Diesel	Oil level:	OK
Battery functioning:	Yes	Parking lot:	LCV29
Number of doors:	5		
Number of seats:	3		
Number head rests:	3		
Rims summer:	Steel		
Category:	Light Commercial Vehicle		
Oil level:	OK		

Options

Radio CD		Type of Tow bar	Tow bar fixed
Windows electric F			
Type of headlighting	Headlighting Halogen		
Type of GPS	No GPS		
Type of Lining	Lining fabrics		
Type of climate control	No climate control		

Limited Technical Inspection

Airco functioning	OK	Battery functioning	Yes
Tires wear profile	OK	Power steering	Yes
Idle position	OK	Sound engine	OK
Engine startingtime	OK	Clutch test	OK
Exhaust gass	OK	Wiper fluid level	OK
Handbrake	OK	Transmission	OK
		Lighting	OK
		Wiperblades	OK

Degree of wear

	215/70/16/107 S Steel			
Summer tyres:	Fr.L.	Michelin: 3 mm	Fr.R.	Michelin: 3 mm
	Re.L.	Michelin: 3 mm	Re.R.	Michelin: 3 mm

Assistance equipment

Spare wheel	Yes	Jack	Yes
Number of charging cables (normal)	0		
Number of charging cables (rapid charge)	0		

Total cost ex VAT	1299,91
-------------------	----------------

Trunk door R R, Scratch(es), Acceptable	0,00
---	-------------

No pictures to display

Wing F R, Dent(s) and scratch(es), LI - Repair and paint (complete)	165,13
---	---------------



Wing R R, Scratch(es), Acceptable	0,00
-----------------------------------	-------------

No pictures to display

Wing F L, Dent(s) and scratch(es), LI - Repair and paint (complete)

165,13



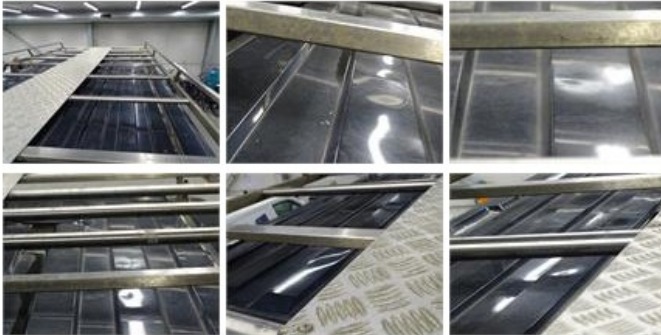
Dashboard, Hole, Acceptable

0,00

No pictures to display

Roof, Dent(s), LI - Repair and paint (complete)

361,13



Bumper F, Scratch(es), Acceptable

0,00

No pictures to display

Sill outer R, Scratch(es), Acceptable

0,00

No pictures to display

Mirror side blinker R, Crack, E - Replace

28,50



Trunk lid covering R, Broken, E - Replace

49,00



Sliding door R, Dent(s) and scratch(es), LI - Repair and paint (complete)

382,02



Bumper R, Scratch(es), Acceptable

0,00

No pictures to display

Bodywork, Not original part, Acceptable

0,00

No pictures to display

Wing R L, Dent(s), PDR - Paintless dent repair

63,00



Rearview mirror housing L, Broken, E - Replace

86,00

