



**RENAULT MEGANE GRANDTOUR: VY4957**

Vinnumber:	<b>VF1RFB00556937771</b>	Versionname:	<b>Energy dCi 110 EDC Bose Edition</b>
First Registrationdate:	<b>13/01/2017</b>	Fiscalpower:	
Expertise Mileage:	<b>102878</b>	Power Kw:	<b>81</b>
Bodytype:		Body color:	<b>Silver</b>
Gearbox:	<b>Automatic</b>	Paint type:	<b>Metalic</b>
Transmission:	<b>Front</b>	Rims summer:	<b>Aluminium</b>
Fueltype:	<b>Diesel</b>	Oil level:	<b>OK</b>
Maintenance:	<b>OK</b>	Parking lot:	<b>3831</b>
Battery functioning:	<b>Yes</b>		
Number of doors:	<b>5</b>		
Number of seats:	<b>5</b>		
Number head rests:	<b>5</b>		
Rims summer:	<b>Aluminium</b>		
Category:	<b>Passenger Car</b>		
Oil level:	<b>OK</b>		
Registration Certificate Car (BE):	<b>Yes</b>		

**Options**

Windows electric F	Sun Roof electric
Windows electric R	Central consol F
Cruise Control	Luggage cover
Steering wheel multifunctional	Front parking sensors
Radio multimedia	Rear parking sensors
Type of headlighting	<b>Headlighting LED</b>
Type of GPS	<b>GPS big screen color</b>
Type of Lining	<b>Lining semi-artificial leather</b>
Type of climate control	<b>Autom climate control</b>

**Limited Technical Inspection**

Airco functioning	<b>OK</b>	Battery functioning	<b>Yes</b>
Tires wear profile	<b>OK</b>	Power steering	<b>Yes</b>
Idle position	<b>OK</b>	Sound engine	<b>OK</b>
Engine startingtime	<b>OK</b>	Clutch test	<b>OK</b>
Exhaust gass	<b>OK</b>	Wiper fluid level	<b>OK</b>
Handbrake	<b>OK</b>	Transmission	<b>OK</b>
		Lighting	<b>OK</b>
		Wiperblades	<b>OK</b>

**Degree of wear**

	<b>205/50/17/92 MS LightMetal</b>			
Winter tyres:	Fr.L.	<b>Michelin: 4 mm</b>	Fr.R.	<b>Michelin: 4 mm</b>
	Re.L.	<b>Michelin: 5 mm</b>	Re.R.	<b>Michelin: 5 mm</b>

**Assistance equipment**

Repair kit	<b>Yes</b>	Compressor	<b>Yes</b>
------------	------------	------------	------------

Total cost ex VAT	<b>591,80</b>
Alloy rim F R polished, Scratch(es), LI - Repair and paint (complete)	<b>95,00</b>



Alloy rim R R polished, Scratch(es), LI - Repair and paint (complete)

95,00



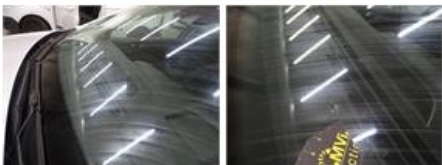
Door F R, Bad repair, LI - Repair and paint (complete)

0,00



Windscreen, Repaired, Acceptable

0,00



Bumper F, Scratch(es), LI - Repair and paint (complete)

211,80



Alloy rim F L polished, Scratch(es), LI - Repair and paint (complete)

95,00



Alloy rim R L polished, Scratch(es), LI - Repair and paint (complete)

95,00

