



**VOLKSWAGEN GOLF VII: 1LGJ474**

Vinnumber:	<b>WVWZZZAUZGW103613</b>	Versionname:	<b>1.6 TDI 66KW TRENDLINE</b>
First Registrationdate:	<b>22/09/2015</b>	Fiscalpower:	
Expertise Mileage:	<b>36564</b>	Power Kw:	<b>66</b>
Bodytype:		Body color:	<b>Dark Blue</b>
Gearbox:	<b>MAN 5 VIT</b>	Paint type:	<b>Metallic</b>
Transmission:	<b>Front</b>	Rims summer:	<b>Steel</b>
Fueltype:	<b>Diesel</b>	Oil level:	<b>OK</b>
Battery functioning:	<b>Yes</b>	Parking lot:	<b>4502</b>
Number of doors:	<b>5</b>		
Number of seats:	<b>5</b>		
Number head rests:	<b>5</b>		
Rims summer:	<b>Steel</b>		
Category:	<b>Passenger Car</b>		
Oil level:	<b>OK</b>		
Registration Certificate Car (BE):	<b>Yes</b>		

**Options**

Windows electric F	Central consol F
Cruise Control	Luggage cover
Steering wheel multifunctional	Front parking sensors
Radio multimedia	Rear parking sensors
Type of headlighting	Type of Tow bar
Type of GPS	<b>Headlighting Halogen</b>
Type of Lining	<b>GPS big screen color</b>
Type of climate control	<b>Lining fabrics</b>
	<b>Autom climate control</b>
	<b>No Tow bar</b>

**Limited Technical Inspection**

Airco functioning	<b>OK</b>	Battery functioning	<b>Yes</b>
Tires wear profile	<b>OK</b>	Power steering	<b>Yes</b>
Idle position	<b>OK</b>	Sound engine	<b>OK</b>
Engine startingtime	<b>OK</b>	Clutch test	<b>OK</b>
Exhaust gass	<b>OK</b>	Wiper fluid level	<b>OK</b>
Handbrake	<b>OK</b>	Transmission	<b>OK</b>
		Lighting	<b>OK</b>
		Wiperblades	<b>OK</b>

**Degree of wear**

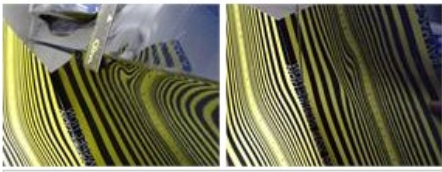
	<b>195/65/15/91 V Steel</b>			
Winter tyres:	Fr.L.	<b>Uniroyal: 5 mm</b>	Fr.R.	<b>Uniroyal: 5 mm</b>
	Re.L.	<b>Uniroyal: 5 mm</b>	Re.R.	<b>Uniroyal: 5 mm</b>

**Assistance equipment**

Emergency spare wheel	<b>Yes</b>	Jack	<b>Yes</b>
Number of charging cables (normal)	<b>0</b>		
Number of charging cables (rapid charge)	<b>0</b>		

<b>Total cost ex VAT</b>	<b>525,35</b>
<b>Door F R, Dent(s) and scratch(es), LI - Repair and paint (complete)</b>	<b>462,35</b>





Bumper R, Scratch(es), Acceptable	0,00
-----------------------------------	------

*No pictures to display*

Roof, Dent(s), PDR - Paintless dent repair	63,00
--	-------



Door R L, Dent(s), Acceptable	0,00
-------------------------------	------

*No pictures to display*

Wheel cover F R, Scratch(es), Acceptable	0,00
--	------

*No pictures to display*