



**BMW 3 BERLINE: 1NDZ677**

Vinnumber:	<b>WBA8F91090K440305</b>	Versionname:	<b>2.0 316D (85KW) BERLINE</b>
First Registrationdate:	<b>2/02/2016</b>	Fiscalpower:	
Expertise Mileage:	<b>119587</b>	Power Kw:	<b>85</b>
Bodytype:		Body color:	<b>Grey</b>
Gearbox:	<b>MAN 6 VIT</b>	Paint type:	<b>Metalic</b>
Transmission:	<b>Back</b>	Rims summer:	<b>Aluminium</b>
Fueltype:	<b>Diesel</b>	Oil level:	<b>OK</b>
Maintenance	<b>PLUS 7000 M</b>	Parking lot:	<b>4205</b>
Maintenance	<b>OK</b>		
Battery functioning	<b>Yes</b>		
Number of doors	<b>4</b>		
Number of seats	<b>5</b>		
Number head rests	<b>5</b>		
Rims summer	<b>Aluminium</b>		
Category	<b>Passenger Car</b>		
Oil level	<b>OK</b>		
Registration Certificate Car (BE)	<b>Yes</b>		

**Options**

Radio CD		Central consol F	
GPS storage	<b>HD</b>	Rear parking sensors	
GPS storage		Type of Tow bar	<b>No Tow bar</b>
Windows electric F			
Windows electric R			
Cruise Control			
Steering wheel multifunctional			
Type of headlighting	<b>Headlighting Halogen</b>		
Type of GPS	<b>GPS big screen color</b>		
Type of Lining	<b>Lining leather</b>		
Type of climate control	<b>Autom climate control</b>		

**Limited Technical Inspection**

Airco functioning	<b>OK</b>	Battery functioning	<b>Yes</b>
Tires wear profile	<b>OK</b>	Power steering	<b>Yes</b>
Idle position	<b>OK</b>	Sound engine	<b>OK</b>
Engine startingtime	<b>OK</b>	Clutch test	<b>OK</b>
Exhaust gass	<b>OK</b>	Wiper fluid level	<b>OK</b>
Handbrake	<b>OK</b>	Transmission	<b>OK</b>
		Lighting	<b>OK</b>
		Wiperblades	<b>OK</b>

**Degree of wear**

<b>205/60/16/92 H LightMetal</b>				
Winter tyres:	Fr.L.	<b>Vredestein: 7 mm</b>	Fr.R.	<b>Vredestein: 7 mm</b>
	Re.L.	<b>Vredestein: 6 mm</b>	Re.R.	<b>Vredestein: 6 mm</b>

**Assistance equipment**

Repair kit	<b>Yes</b>	Compressor	<b>Yes</b>
Total cost ex VAT			<b>587,16</b>
Floor covering F L, Worn, P - Check			<b>0,00</b>



Windscreen, Repaired, P - Check

0,00



Wing R L, Dent(s) and scratch(es), Acceptable

0,00



Alloy rim F R, Scratch(es), Acceptable

0,00



Bumper R, Dent(s) and scratch(es), LI - Repair and paint (complete)

259,80



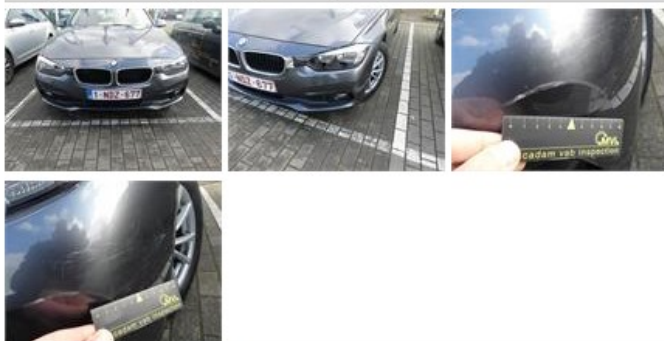
Maintenance, Maintenance, P - Check

0,00



Bumper F, Scratch(es), LI - Repair and paint (complete)

211,80



Bonnet, Scratch(es), 67 - Polish

0,00



Door F L, Scratch(es), It - Spot repair

115,56



Door R R, Dent(s), Acceptable

0,00



Wing R R, Dent(s), Acceptable

0,00

