



MERCEDES A: 1LNT189

Vinnumber:	WDD1760121V114366	Versionname:	1.5 A 180 CDI STYLE
First Registrationdate:	30/10/2015	Fiscalpower:	
Expertise Mileage:	126430	Power Kw:	80
Bodytype:		Body color:	Grey
Gearbox:	MAN 6 VIT	Paint type:	Metalic
Transmission:	Back	Rims summer:	Aluminium
Fueltype:	Diesel	Oil level:	OK
Maintenance:	NOT OK	Parking lot:	2706
Battery functioning:	Yes		
Number of doors:	5		
Number of seats:	5		
Number head rests:	5		
Rims summer:	Aluminium		
Category:	Passenger Car		
Oil level:	OK		
Registration Certificate Car (BE):	Yes		

Options

Radio CD		Central consol F
GPS storage		Luggage cover
GPS storage	SD	
Windows electric F		
Windows electric R		
Steering wheel multifunctional		
Type of headlighting	Headlighting Halogen	
Type of GPS	GPS big screen color	
Type of Lining	Lining semi-artificial leather	
Type of climate control	Manual climate control	

Limited Technical Inspection

Airco functioning	OK	Battery functioning	Yes
Tires wear profile	OK	Power steering	Yes
Idle position	OK	Sound engine	OK
Engine startingtime	OK	Clutch test	OK
Exhaust gass	OK	Wiper fluid level	OK
Handbrake	OK	Transmission	OK
		Lighting	OK
		Wiperblades	OK

Degree of wear

205/55/16/92 MS LightMetal				
Winter tyres:	Fr.L.	Michelin: 4 mm	Fr.R.	Michelin: 4 mm
	Re.L.	Michelin: 5 mm	Re.R.	Michelin: 5 mm

Assistance equipment

Repair kit	Yes	Compressor	Yes
------------	------------	------------	------------

Total cost ex VAT 1451,13

Maintenance, Maintenance, Execute 0,00



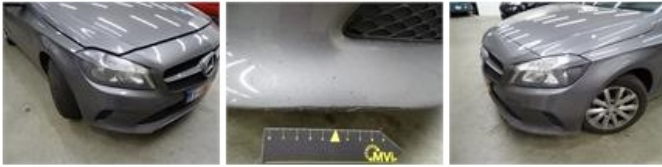
Alloy rim F R, Scratch(es), LI - Repair and paint (complete) 95,00



Wing F R, Scratch(es), LI - Repair and paint (complete) 220,18



Bumper F, Scratch(es), LI - Repair and paint (complete) 211,80



Door F R, Dent(s), LI - Repair and paint (complete) 318,35



Bumper R, Dent(s) and scratch(es), LI - Repair and paint (complete) 235,80



Rear window, Scratch(es), E - Replace 370,00

