


**RENAULT GRAND SC?NIC: 1JNA262**

Vinnumber:	<b>VF1JZ14P652207645</b>	Versionname:	<b>1.5 ENERGY DCI 110 BOSE EDITION 7P</b>
First Registrationdate:	<b>20/01/2015</b>	Fiscalpower:	
Expertise Mileage:	<b>100046</b>	Power Kw:	<b>81</b>
Bodytype:		Body color:	<b>Red</b>
Gearbox:	<b>MAN 6 VIT</b>	Paint type:	<b>Metalic</b>
Transmission:	<b>Front</b>	Rims summer:	<b>Aluminium</b>
Fueltype:	<b>Diesel</b>	Oil level:	<b>OK</b>
Battery functioning:	<b>Yes</b>	Parking lot:	<b>2710</b>
Number of doors:	<b>5</b>		
Number of seats:	<b>7</b>		
Number head rests:	<b>7</b>		
Rims summer:	<b>Aluminium</b>		
Category:	<b>Passenger Car</b>		
Oil level:	<b>OK</b>		
Registration Certificate Car (BE):	<b>Yes</b>		

**Options**

Radio CD	Sun Roof electric
GPS storage	Panoramic roof
Windows electric F	Central consol F
Windows electric R	Luggage cover
Cruise Control	Front parking sensors
Steering wheel multifunctional	Rear parking sensors
Radio multimedia	
Type of headlighting	<b>Headlighting Halogen</b>
Type of GPS	<b>GPS big screen color</b>
Type of Lining	<b>Lining semi-artificial leather</b>
Type of climate control	<b>Autom climate control</b>

**Limited Technical Inspection**

Airco functioning	<b>OK</b>	Battery functioning	<b>Yes</b>
Tires wear profile	<b>OK</b>	Power steering	<b>Yes</b>
Idle position	<b>OK</b>	Sound engine	<b>OK</b>
Engine startingtime	<b>OK</b>	Clutch test	<b>OK</b>
Exhaust gass	<b>OK</b>	Wiper fluid level	<b>OK</b>
Handbrake	<b>OK</b>	Transmission	<b>OK</b>
		Lighting	<b>NOT OK</b>
		Wiperblades	<b>OK</b>

**Degree of wear**

<b>205/55/17/91 W LightMetal</b>				
Summer tyres:	Fr.L.	<b>Michelin: 2 mm</b>	Fr.R.	<b>Michelin: 2 mm</b>
	Re.L.	<b>Michelin: 3 mm</b>	Re.R.	<b>Michelin: 3 mm</b>

**Assistance equipment**

Emergency spare wheel	<b>Yes</b>	Jack	<b>Yes</b>
Number of charging cables (normal)	<b>0</b>		
Number of charging cables (rapid charge)	<b>0</b>		

Total cost ex VAT	2369,70
Alloy rim F R polished, Scratch(es), LI - Repair and paint (complete)	95,00



Wing F R, Scratch(es), Acceptable 0,00

No pictures to display

Bonnet, Chemical pollution, LI - Repair and paint (complete) 290,08



Wing R R, Dent(s), Acceptable 0,00

No pictures to display

Alloy rim R R polished, Scratch(es), LI - Repair and paint (complete) 95,00



Door F L, Dent(s), Acceptable 0,00

No pictures to display

Daytime running lights L, Waterinfiltration, Acceptable 0,00



Alloy rim R L polished, Scratch(es), Acceptable 0,00

No pictures to display

Door F L, Scratch(es), Acceptable 0,00

No pictures to display

Roof pillar R, Dent(s), PDR - Paintless dent repair 63,00



Bumper R, Scratch(es), LI - Repair and paint (complete) 211,80



Alloy rim F L polished, Scratch(es), LI - Repair and paint (complete) 95,00



Rocker panel inner R R, Dent(s), LI - Repair and paint (complete) 115,56



Rocker panel inner R L, Dent(s), LI - Repair and paint (complete) 115,56

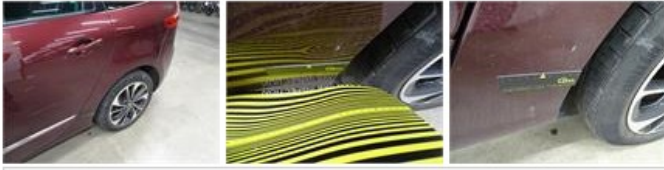




Door R R, Dent(s), Acceptable 0,00

No pictures to display

Wing R L, Dent(s), LI - Repair and paint (complete) 308,20



Bumper F, Scratch(es), LI - Repair and paint (complete) 211,80



Door F R, Dent(s) and scratch(es), LI - Repair and paint (complete) 318,35



Door R L, Scratch(es), LI - Repair and paint (complete) 318,35



Tyre F L, Tear, E - Replace 132,00

