



VOLKSWAGEN Caddy: 1CBX478

Vinnumber:	WV1ZZZ2KZCX043550	Versionname:	CADDY VAN B/F BM Start/Stop 102PK
First Registrationdate:	14/10/2011	Fiscalpower:	
Expertise Mileage:	118057	Power Kw:	75
Bodytype:	Transporter	Body color:	Grey
Gearbox:	MAN 5 VIT	Paint type:	Metalic
Transmission:	Front	Rims summer:	Steel
Fueltype:	Diesel	Oil level:	OK
Battery functioning:	Yes	Parking lot:	3623
Number of doors:	5		
Number of seats:	2		
Number head rests:	2		
Rims summer:	Steel		
Category:	Light Commercial Vehicle		
Oil level:	OK		

Options

Radio CD		Type of Tow bar	Tow bar fixed
Windows electric F			
Cruise Control			
Radio multimedia			
Type of headlighting	Headlighting Halogen		
Type of GPS	No GPS		
Type of Lining	Lining artificial leather		
Type of climate control	Manual climate control		

Limited Technical Inspection

Airco functioning	OK	Battery functioning	Yes
Tires wear profile	OK	Power steering	Yes
Idle position	OK	Sound engine	OK
Engine startingtime	OK	Clutch test	OK
Exhaust gass	OK	Wiper fluid level	OK
Handbrake	OK	Transmission	OK
		Lighting	OK
		Wiperblades	OK

Degree of wear

	195/65/15/91 T Steel			
Winter tyres:	Fr.L.	Goodyear: 5 mm	Fr.R.	Goodyear: 5 mm
	Re.L.	Kleber: 3 mm	Re.R.	Kleber: 3 mm

Assistance equipment

Spare wheel	Yes	Jack	Yes
Number of charging cables (normal)	0		
Number of charging cables (rapid charge)	0		

Total cost ex VAT	953,11
Door R R, Scratch(es), Acceptable	0,00
<i>No pictures to display</i>	
Wing R L, Dent(s) and scratch(es), LI - Repair and paint (complete)	231,15



Bumper F, Scratch(es), Acceptable 0,00

No pictures to display

Roof, Chemical pollution, 67 - Polish 0,00

No pictures to display

Windscreen, Scratch(es), Acceptable 0,00



Backrest cover F L, Worn, Acceptable 0,00



Supplementary brake lights, Broken, E - Replace 33,00



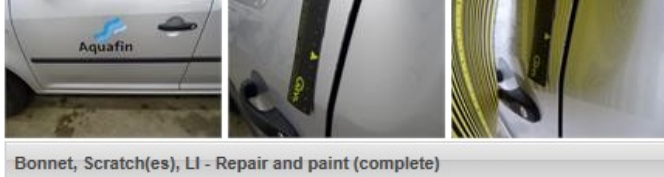
Wing R R, Scratch(es), Acceptable 0,00

No pictures to display

Wing F R, Dent(s), Acceptable 0,00

No pictures to display

Door F L, Dent(s) and scratch(es), LI - Repair and paint (complete) 238,76



Bonnet, Scratch(es), LI - Repair and paint (complete) 217,56



Door F R, Dent(s) and scratch(es), Acceptable 0,00

No pictures to display

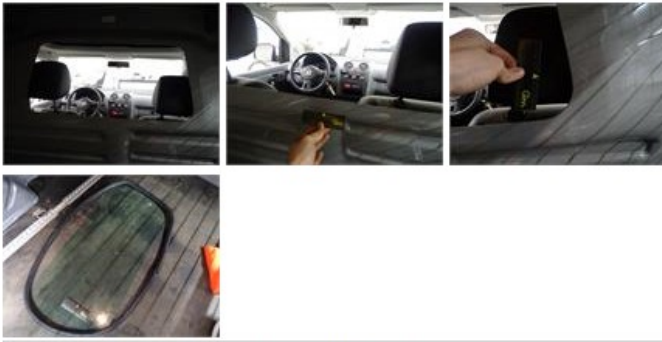
Trunk door R R, Scratch(es), Acceptable 0,00

No pictures to display

Trunk door R L, Scratch(es), Acceptable 0,00

No pictures to display

Rear bulkhead lining, Not original part, Repair/replace (lump sum) 48,00



Protection plate M, Deformed / Strained, E - Replace

74,00



Bumper R, Scratch(es), Smart repair

110,64

