


**BMW X1: 1RDT309**

Vinnumber:	<b>WBAHT710505G29516</b>	Versionname:	<b>2.0 SDRIVE18D (110KW)</b>
First Registrationdate:	<b>24/11/2016</b>	Fiscalpower:	
Expertise Mileage:	<b>169156</b>	Power Kw:	<b>110</b>
Bodytype:		Body color:	<b>Brown</b>
Gearbox:	<b>Automatic</b>	Paint type:	<b>Metalic</b>
Transmission:	<b>Back</b>	Rims summer:	<b>Aluminium</b>
Fueltype:	<b>Diesel</b>	Oil level:	<b>OK</b>
Maintenance:	<b>OK</b>	Parking lot:	<b>3223</b>
Battery functioning:	<b>Yes</b>		
Number of doors:	<b>5</b>		
Number of seats:	<b>5</b>		
Number head rests:	<b>5</b>		
Rims summer:	<b>Aluminium</b>		
Category:	<b>Passenger Car</b>		
Oil level:	<b>OK</b>		
Registration Certificate Car (BE):	<b>Yes</b>		

**Options**

Windows electric F	Central consol F
Windows electric R	Luggage cover
Cruise Control	Front parking sensors
Steering wheel multifunctional	Rear parking sensors
Radio multimedia	Type of Tow bar
Type of headlighting	<b>Headlighting Halogen</b>
Type of GPS	<b>GPS big screen color</b>
Type of Lining	<b>Lining artificial leather</b>
Type of climate control	<b>Autom climate control</b>
	<b>Tow bar removable</b>

**Limited Technical Inspection**

Airco functioning	<b>OK</b>	Battery functioning	<b>Yes</b>
Tires wear profile	<b>OK</b>	Power steering	<b>Yes</b>
Idle position	<b>OK</b>	Sound engine	<b>OK</b>
Engine startingtime	<b>OK</b>	Clutch test	<b>OK</b>
Exhaust gass	<b>OK</b>	Wiper fluid level	<b>OK</b>
Handbrake	<b>OK</b>	Transmission	<b>OK</b>
		Lighting	<b>OK</b>
		Wiperblades	<b>OK</b>

**Degree of wear**

	<b>225/55/17/92 H LightMetal</b>			
Summer tyres:	Fr.L.	<b>Bridgestone: 4 mm</b>	Fr.R.	<b>Bridgestone: 4 mm</b>
	Re.L.	<b>Bridgestone: 5 mm</b>	Re.R.	<b>Bridgestone: 5 mm</b>

**Assistance equipment**

	Runflat	<b>Yes</b>
Total cost ex VAT		<b>275,00</b>
Door R L, Dent(s), Acceptable		<b>0,00</b>
<i>No pictures to display</i>		
Ignition key, Missing, E - Replace		<b>150,00</b>
<i>No pictures to display</i>		
Fuel cap cover, Scratch(es), LI - Repair and paint (complete)		<b>75,00</b>



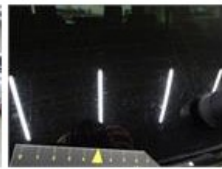
Bumper R, Scratch(es), Acceptable	0,00
-----------------------------------	------

*No pictures to display*

Ceiling, Dirty, Cleaning	50,00
--------------------------	-------



Rear window, Scratch(es), E - Replace	0,00
---------------------------------------	------



Alloy rim F R, Scratch(es), Acceptable	0,00
--	------

*No pictures to display*

Backrest cover F L, Scratch(es), Acceptable	0,00
---	------

*No pictures to display*

Bumper cover R M, Scratch(es), Acceptable	0,00
---	------

*No pictures to display*

Door R R, Dent(s), Acceptable	0,00
-------------------------------	------

*No pictures to display*

Door F L, Dent(s) and scratch(es), Acceptable	0,00
---	------

*No pictures to display*